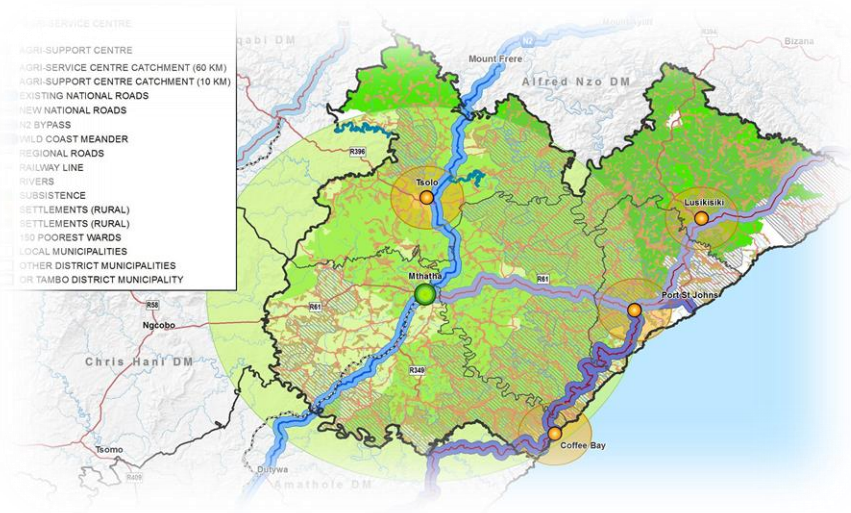


RURAL DEVELOPMENT PLAN FOR THE OR TAMBO DM

The Stakeholder participation Workshop
9 November 2015



rural development
& land reform
Department:
Rural Development and Land Reform
REPUBLIC OF SOUTH AFRICA

RURAL DEVELOPMENT PLAN FOR THE AMATHOLE DM

Rowan van Gend

rowan@udec.co.za

082 5696339

041 3743980



rural development
& land reform
Department:
Rural Development and Land Reform
REPUBLIC OF SOUTH AFRICA

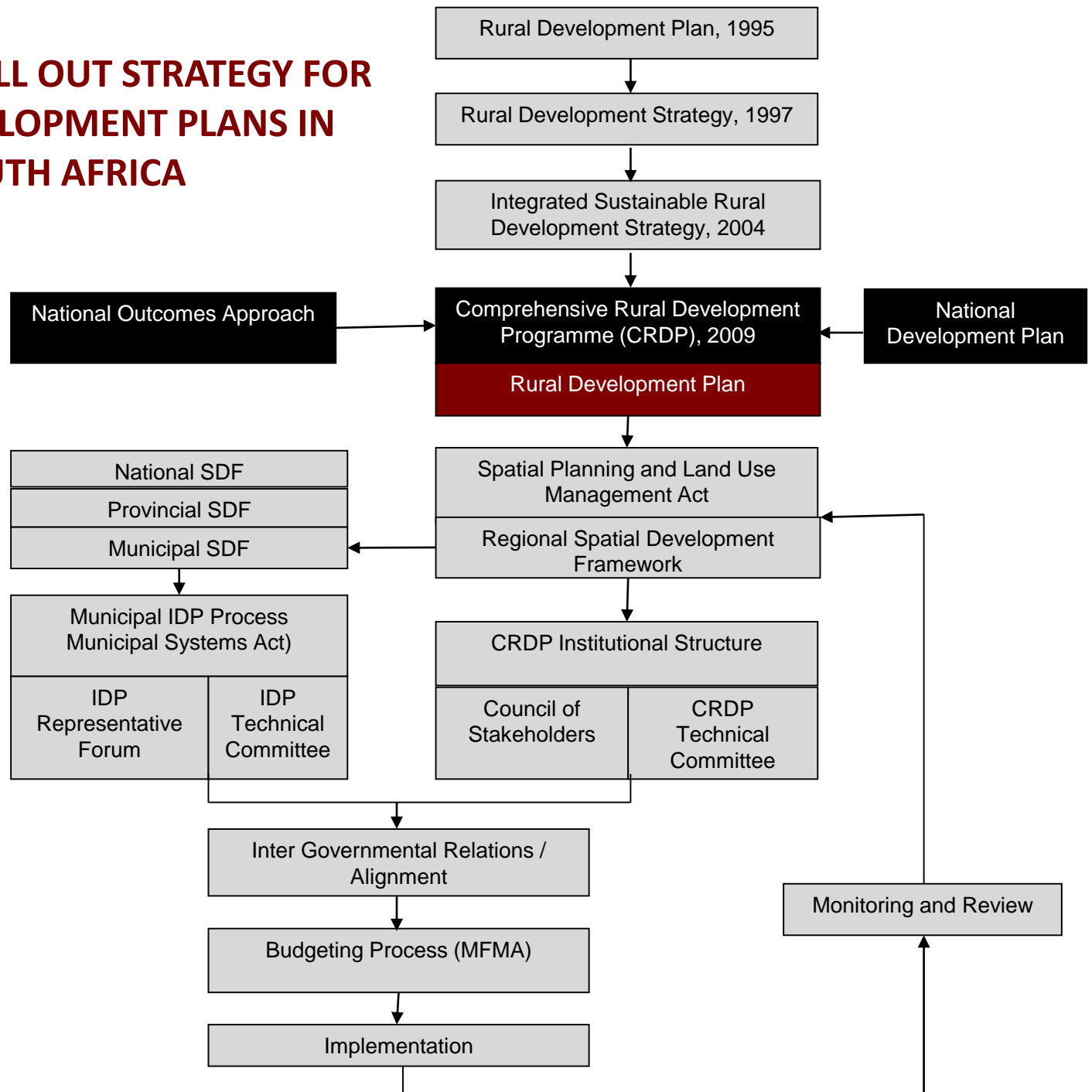
The Presentation Format

- Background
- Strategic linkages
- Snapshot of Spatial and Economic status
- The Development Framework and strategy
- The Draft Rural development Plan
- Some Rural Development Initiatives and projects



PROPOSED ROLL OUT STRATEGY FOR RURAL DEVELOPMENT PLANS IN SOUTH AFRICA

INSTITUTIONAL ALIGNMENT



The Strategic Linkages

National Government

- *The NDP aims to eradicate poverty, increase employment and reduce inequality by 2030*
- *Priority areas, inter alia rural development, land reform and food security*
- *MTSF (2014 to 2019)- Outcome 7 -“Vibrant equitable sustainable rural communities contributing towards food security for all”*
- *SIP14 Agri- logistics and rural infrastructure*

Provincial Government

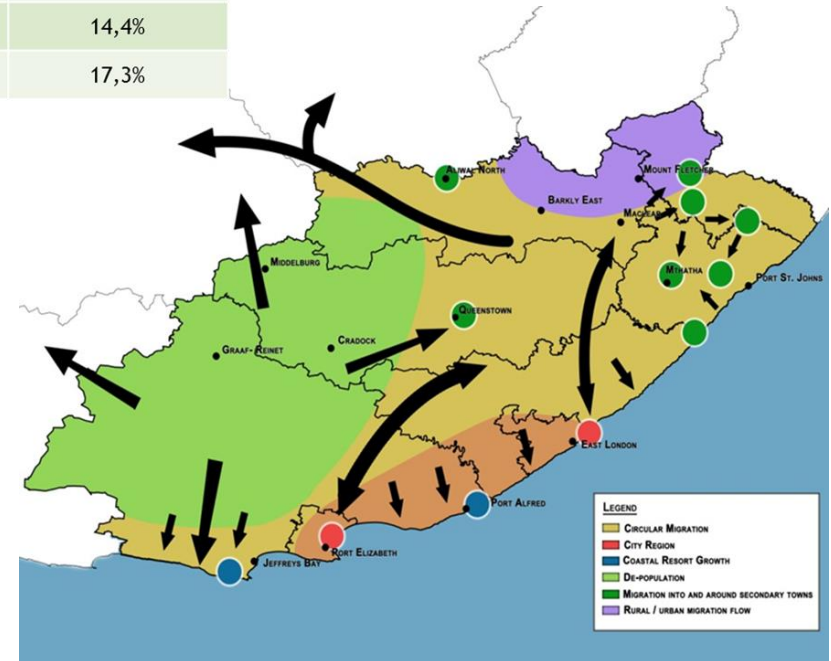
- *PDP proposes, inter alia “a more serious drive to transform and develop rural areas...”*
- *PMTSF (2014 to 2019)- Priority 8,3 -“Stimulating rural development, land reform and food security”*



Snapshot of Spatial and Economic Status

	2001	2011	Rural Growth	Urban Growth
South Africa	19 026 764	19 210 892	1,0%	26,2%
Eastern Cape	3 777 863	3 576 669	-5,3%	19,4%
Sarah Baartman	89 286	77 661	-13,0%	24,8%
Amathole	804 804	692 327	-14,0%	23,4%
Chris Hani	535 695	498 965	-6,9%	11,8%
Joe Gqabi	239 471	222 202	-7,2%	24,1%
O.R. Tambo	1 168 557	1 175 420	0,6%	49,8%
Alfred Nzo	742 295	749 286	0,9%	69,2%
Nelson Mandela Bay	22 226	26 846	20,8%	14,4%
Buffalo City	175 528	133 962	-23,7%	17,3%

- Migration from Rural to Urban areas and specifically the Metros
- Rural population is decreasing
- Increasing Urban population growth

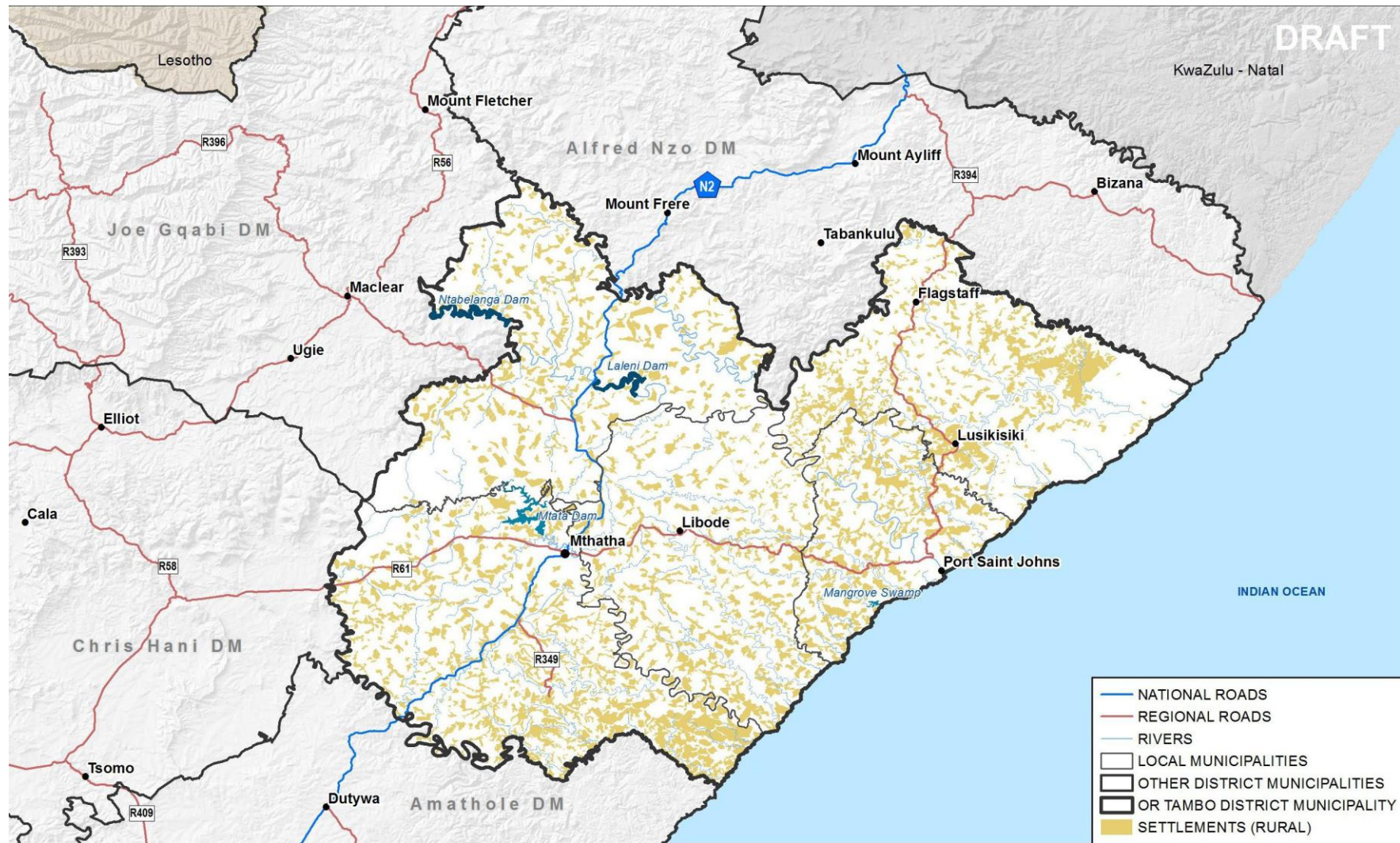


Snapshot of Spatial and Economic Status

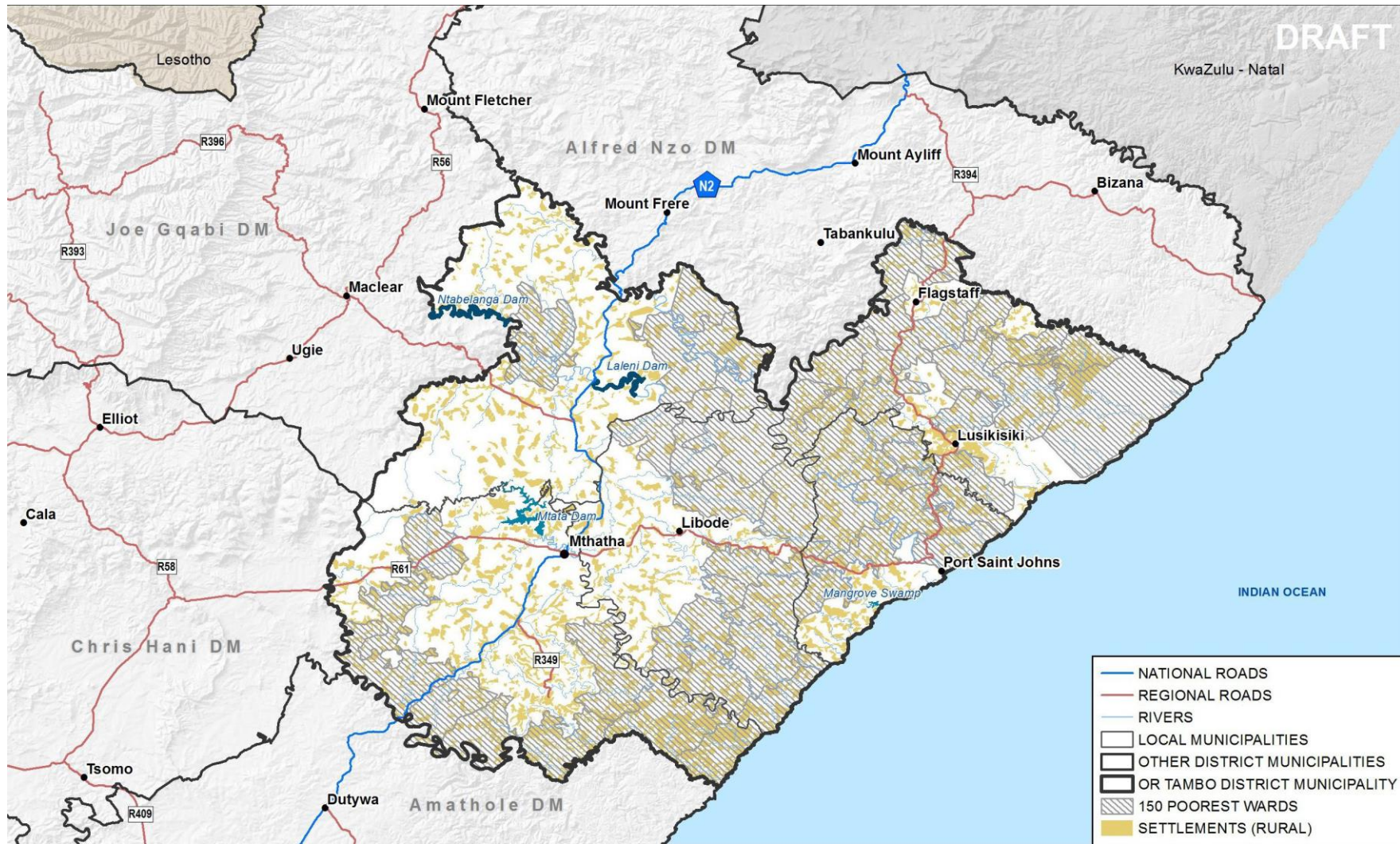
	Total	Growth on Previous Period	Provincial Growth Comparison
Population	1 367 098 (2013)	0.58% (2012) 3.12% (2008)	↑ ↑
Urban	189 522(2011)	49.8% (2001)	↑
Rural	1 175 420 (2011)	0.6% (2001)	↑
Density	113.0 persons/km ²	-	↓
Education			
No Education	17.9%	↓	-
Matric	15.7%	↑	
Higher Education	7.1%	↑	
Socio-Economic Quintile	1	-	=
Gini Coefficient	75.49 (2013)	-	↓
Unemployment Rate	26.52% (2013)	↑	↓
Formal Employment	143 103 (2013)	1.6% (2012)	↑
Informal employment	72 127 (2013)	11.4% (2012)	↑



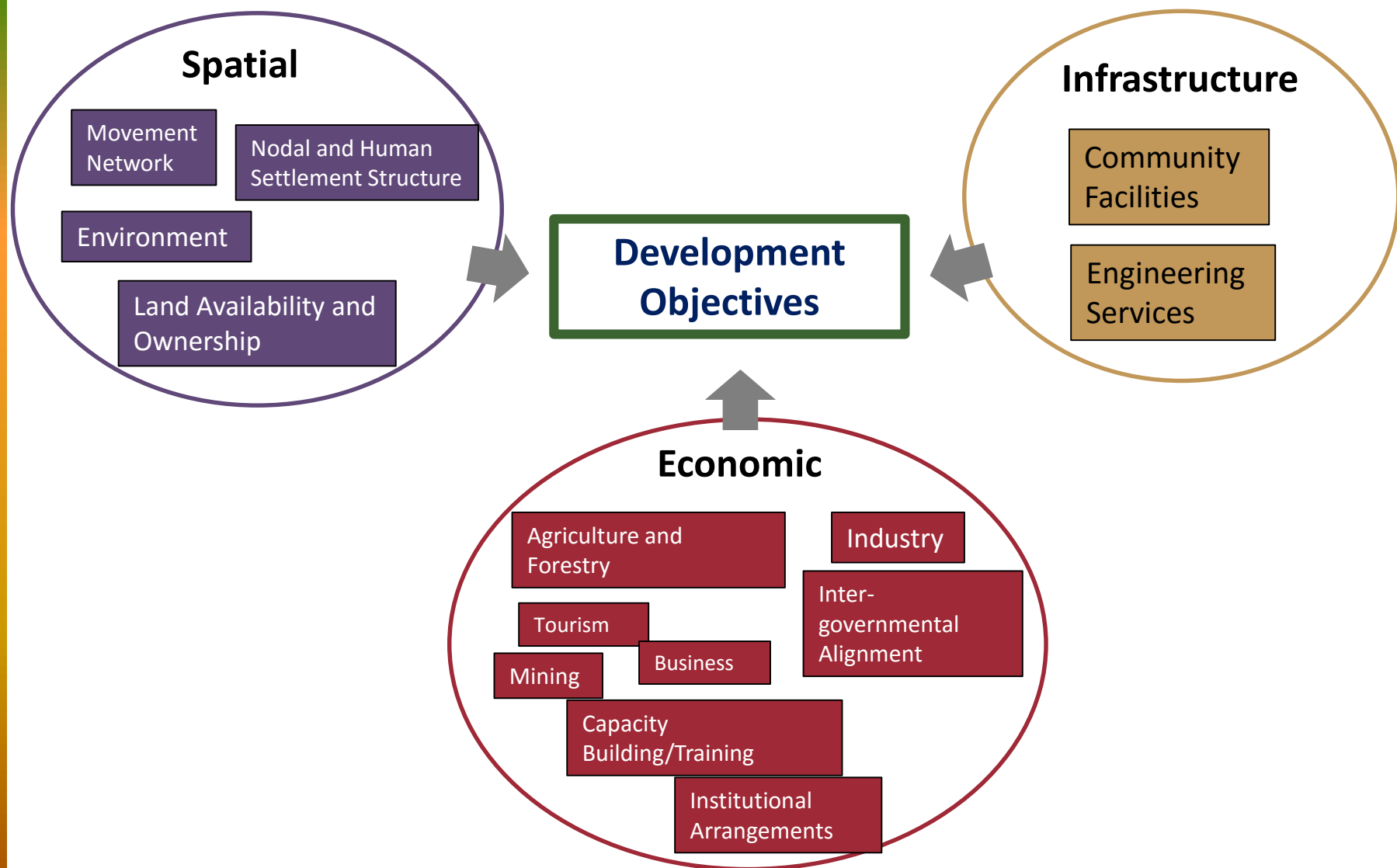
Snapshot of Spatial and Economic Status – Settlement Pattern



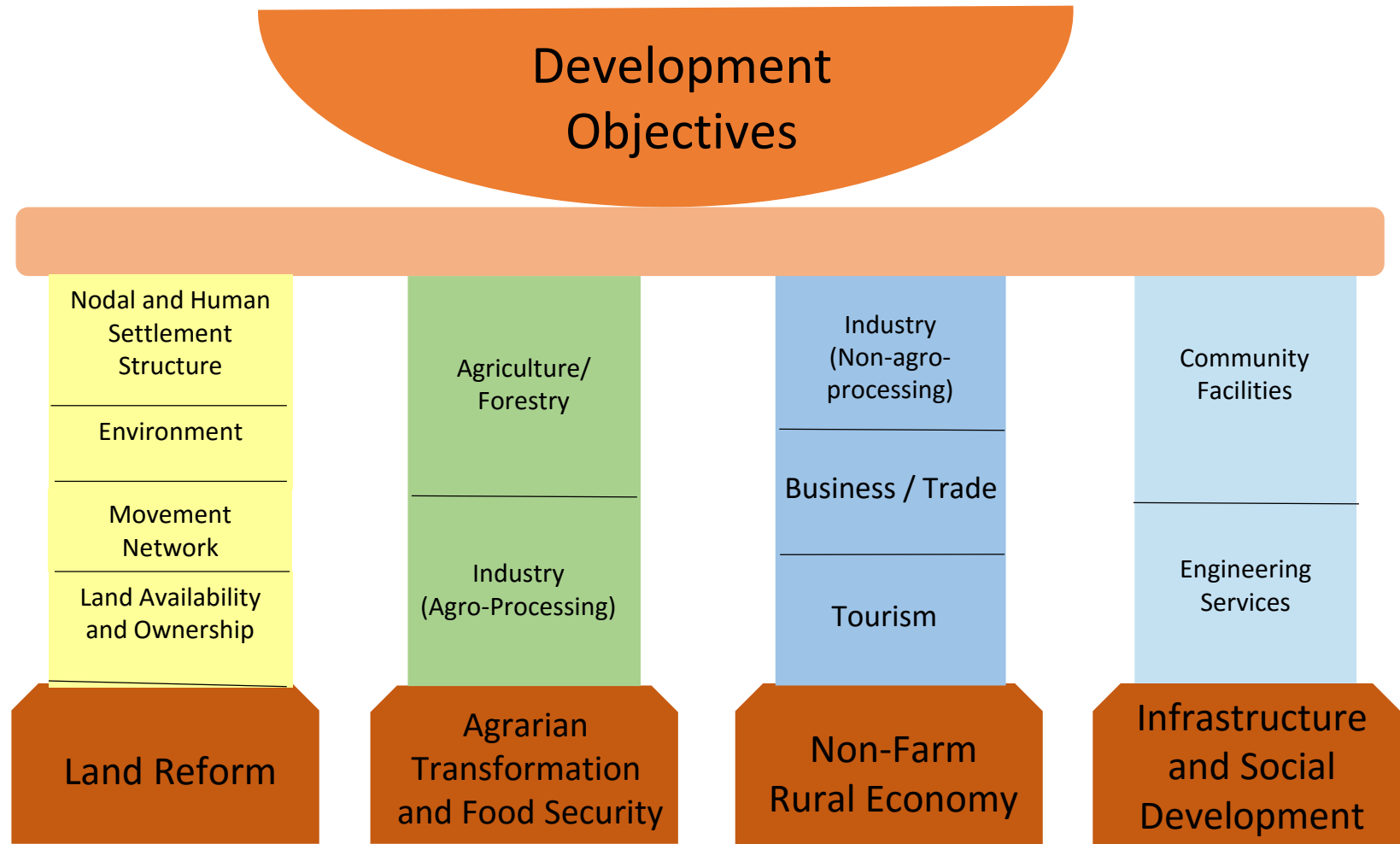
Snapshot of Spatial and Economic Status – Poverty Zones and Poorest Wards



The Development Framework and Strategy



The Development Framework – Objectives and Pillars



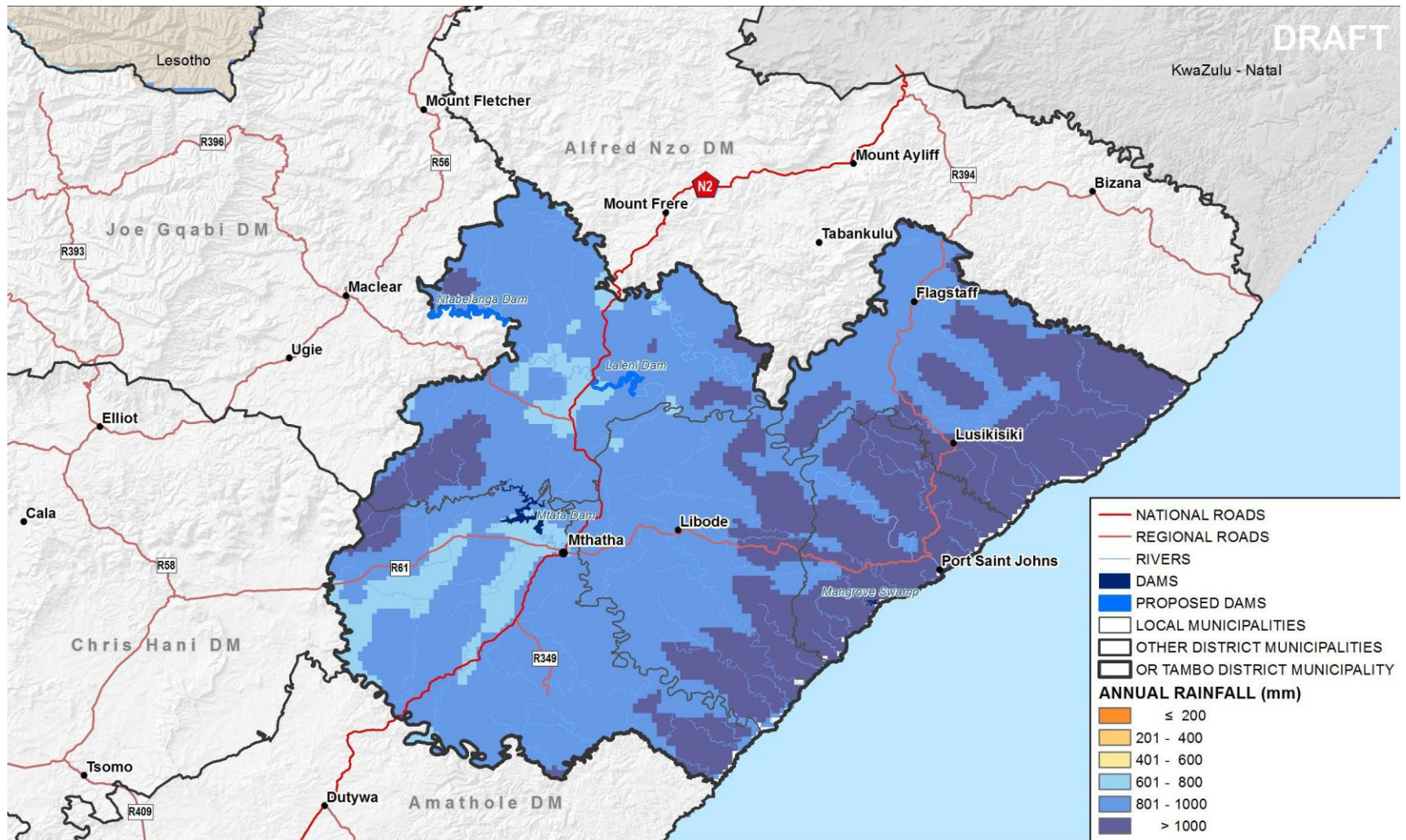
District Pillar Opportunity – O.R. Tambo

Agrarian Transformation and Food Security	Opportunities
Goats	<ul style="list-style-type: none"> Expanding goat production for export Optimising slaughtering of goats and meat processing SMME opportunity in meat and hide processing Multi-purpose feedlots
Fat lamb and wool	<ul style="list-style-type: none"> Strengthening primary breeding stock Development of abattoirs and micro-butcheries Small scale processing of wool products for tourism Promoting small scale natural fodder production linked
Cattle (beef and dairy)	<ul style="list-style-type: none"> Development of feedlots Animal feed suppliers Increasing existing capacity of abattoirs Development of new abattoirs Long term opportunity for SMME hide processing (tanneries) for the automotive industry
Poultry	<ul style="list-style-type: none"> Expanding existing broiler production Inputs - Animal Feed suppliers Establishment of poultry abattoirs Enhancing informal trading linkages with emerging farmers
Crops (Maize)	<ul style="list-style-type: none"> Seed suppliers Milling – maize meal as well as animal feed production Wet milling Brewing (beer, etc.)
Horticulture	<ul style="list-style-type: none"> Semi processing Local market provision Value-Adding processes Crop Expansion
Forestry	<ul style="list-style-type: none"> Micro saw mills and existing saw mill optimisation Treated and dried timber Chipboard and floor boards Furniture manufacturing Charcoal and construction products
	<ul style="list-style-type: none"> All levels of primary production

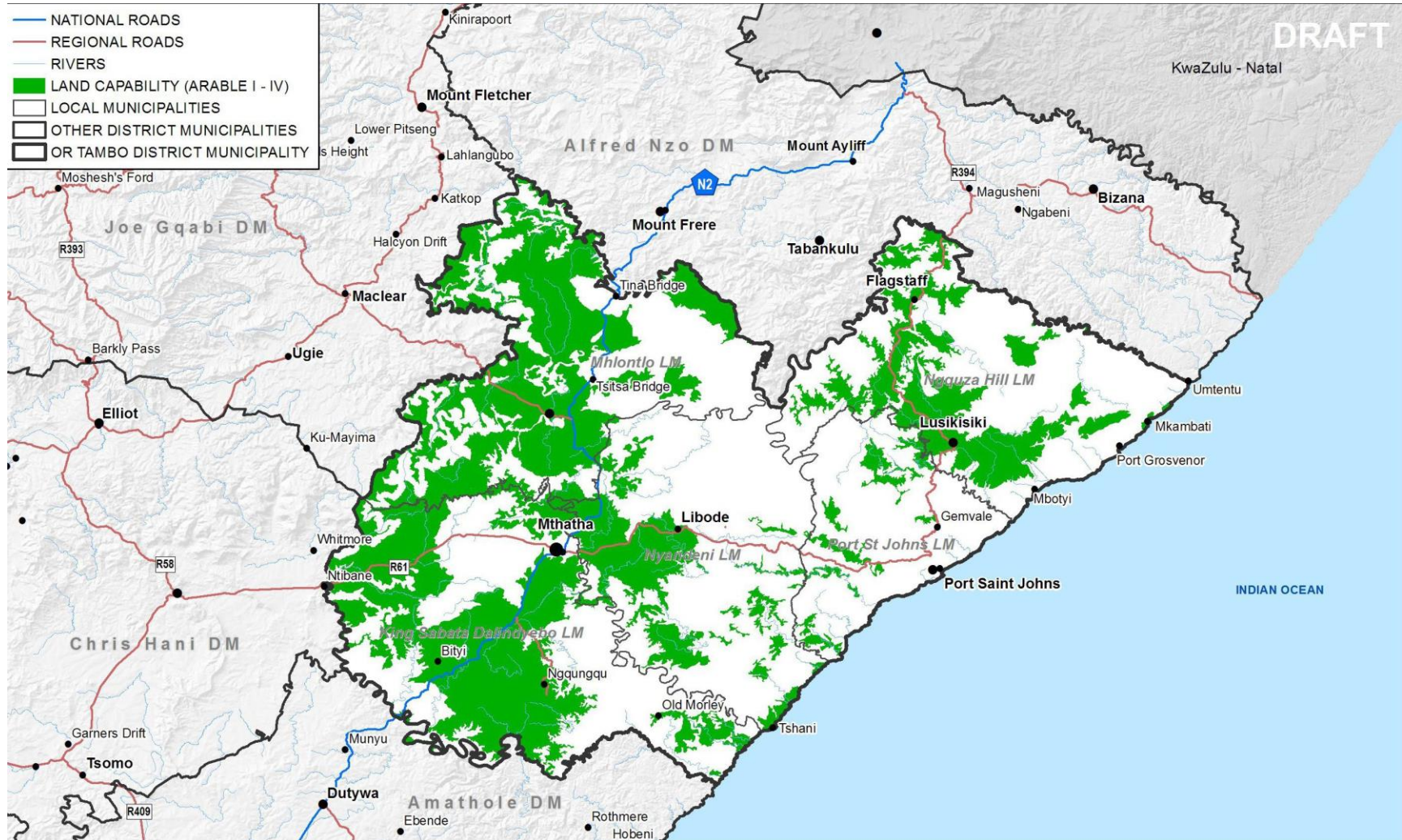
Non-Rural	Opportunities
Business and Trade Services	<ul style="list-style-type: none"> Expand rural retail and commercial services in selected rural nodes.
Tourism	<ul style="list-style-type: none"> Adventure tourism: Port St. Johns Heritage theme park Nelson Mandela Cultural Precinct Ntlangano nature conservancy Mthatha casino Tsitsa and Thina river developments Promulgation of towns along Wild Coast
Renewable Energy	<ul style="list-style-type: none"> Provision of downstream services (security, fencing, maintenance, logistics)



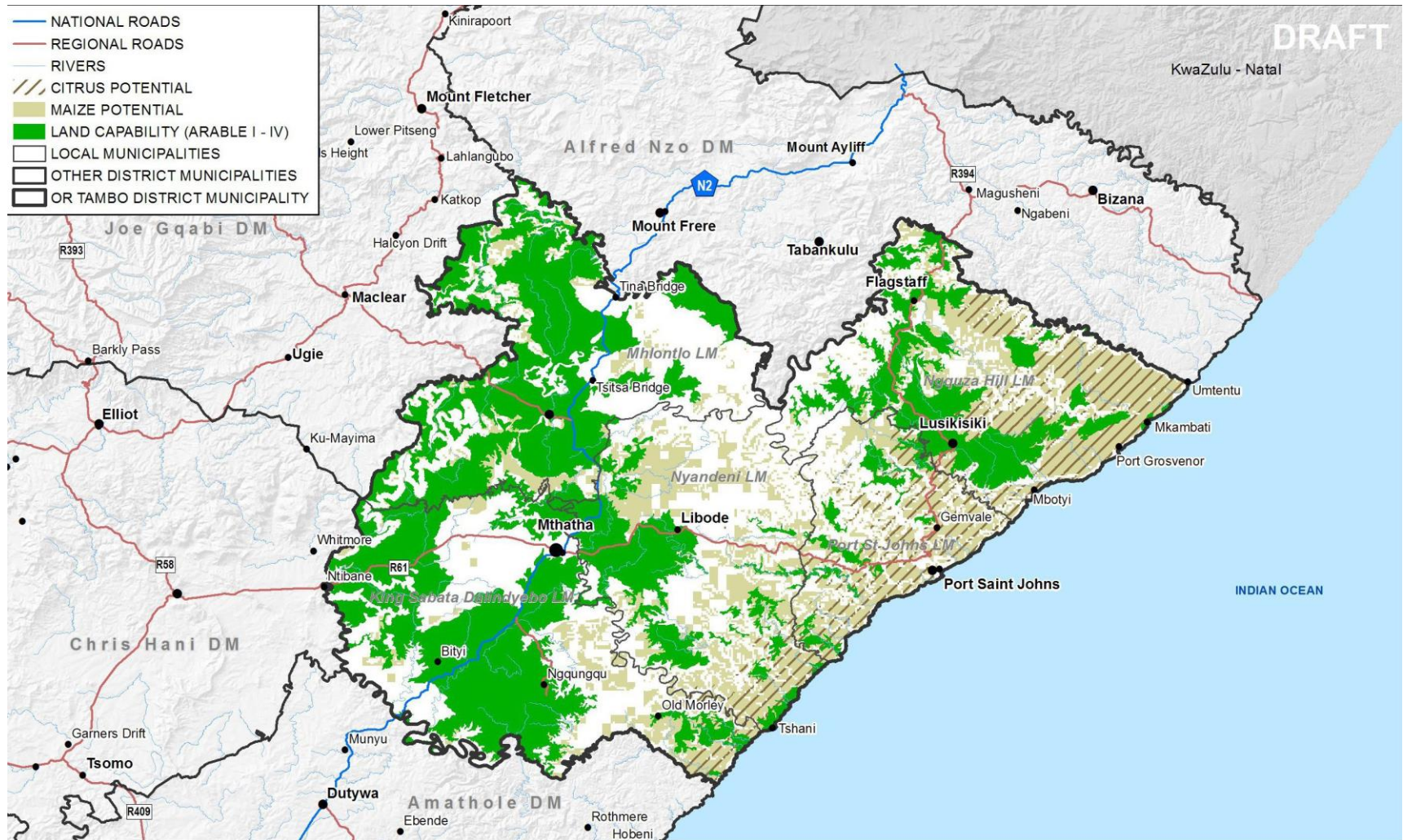
The Development Framework – Rainfall



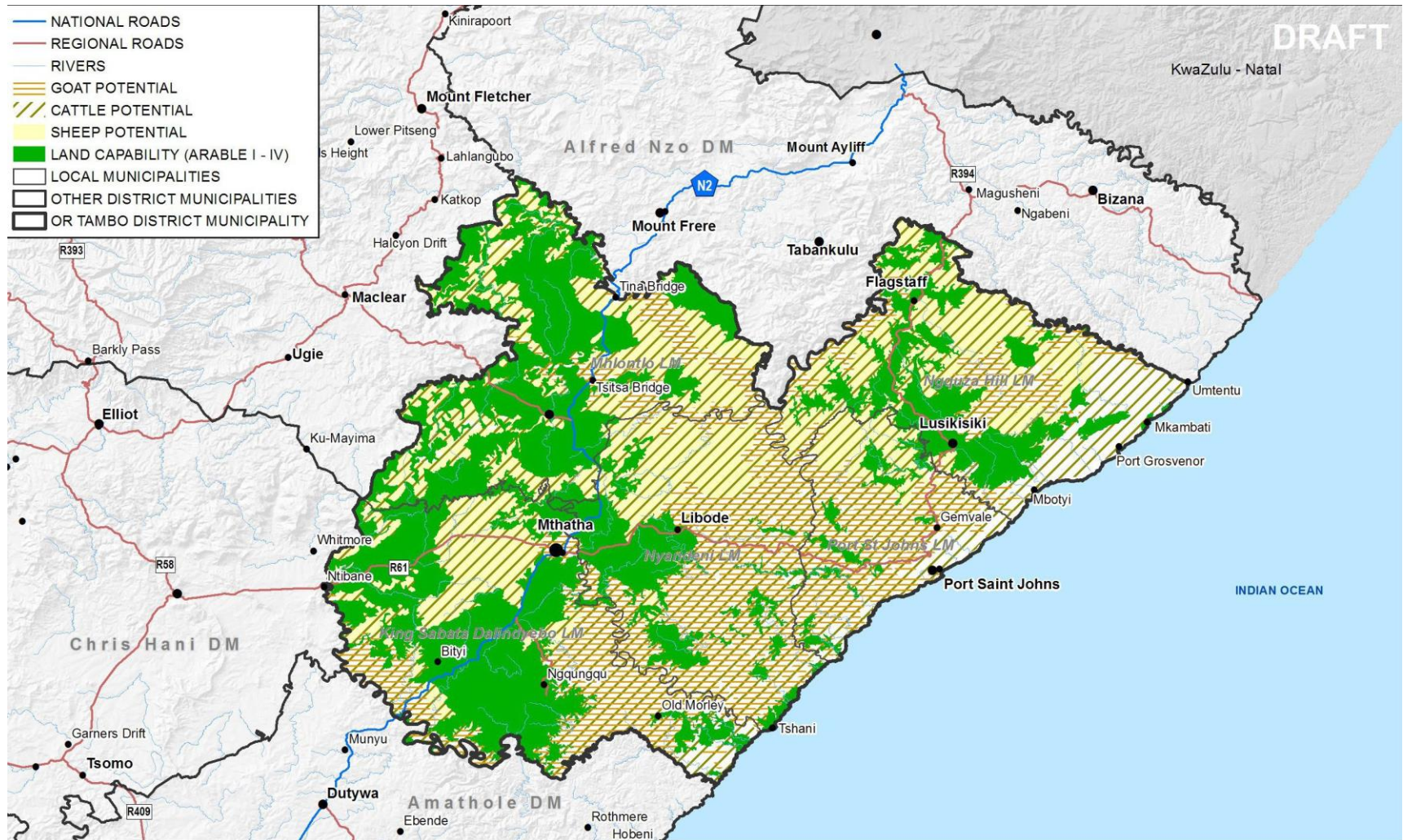
The Development Framework - Land Capability Index



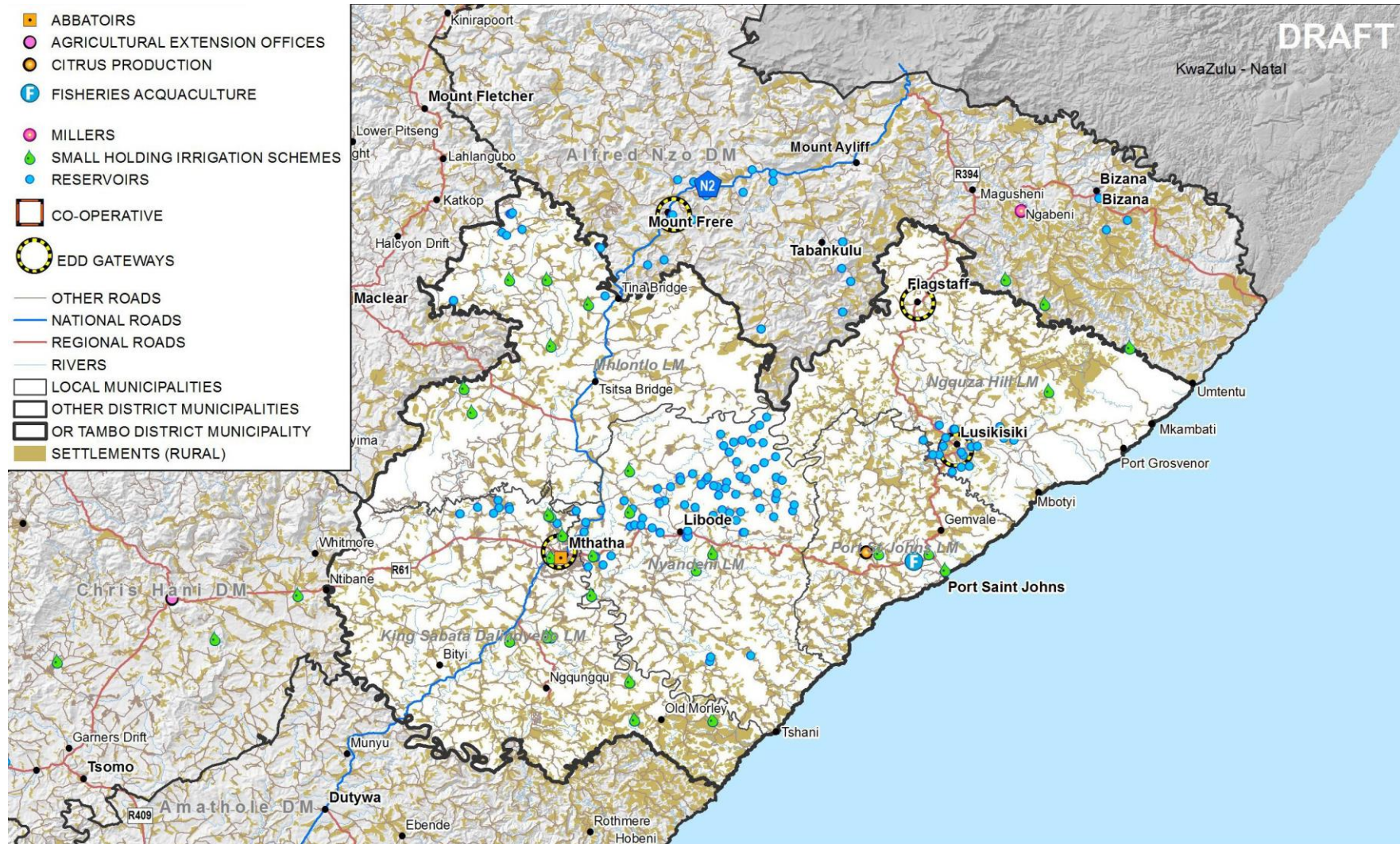
The Development Framework - Land Capability Index and Crop Potential



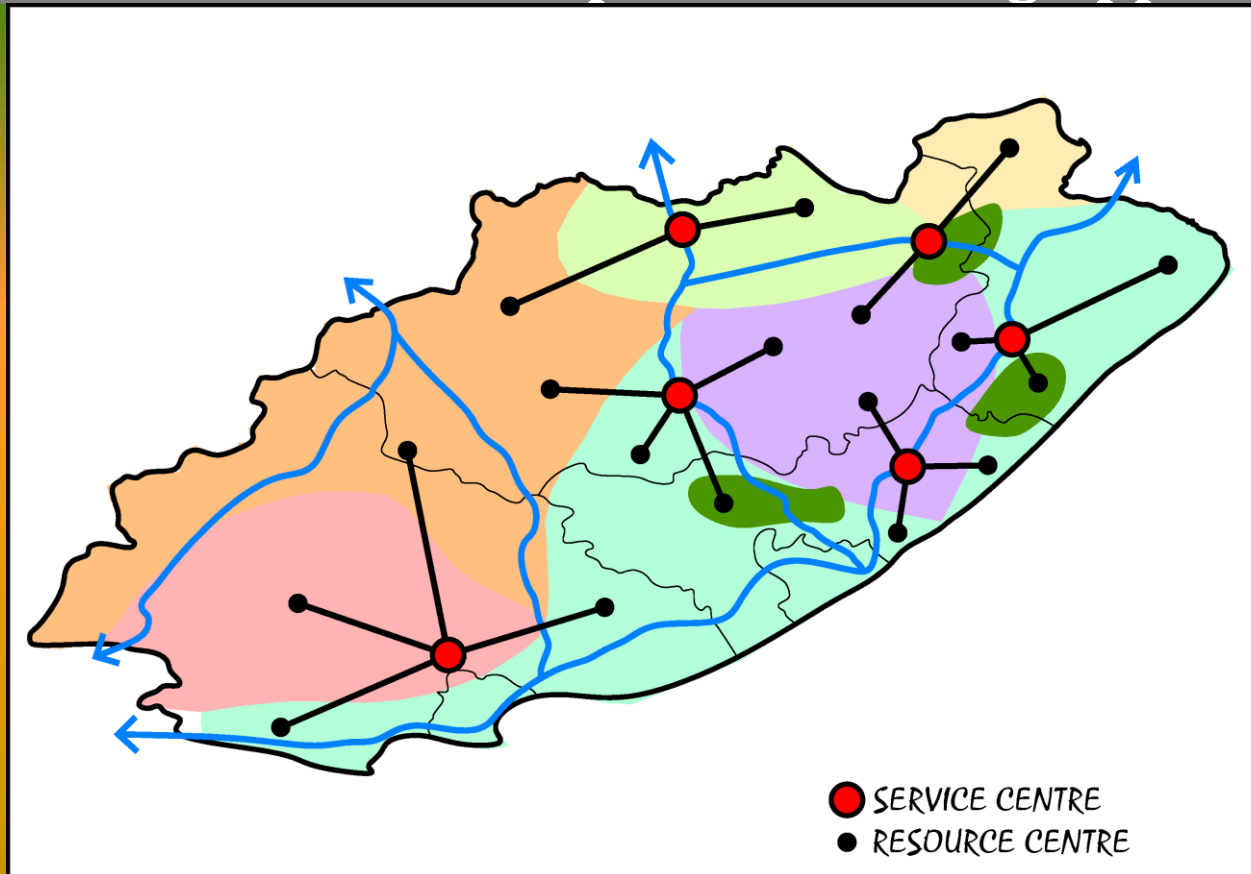
The Development Framework - Land Capability Index and Livestock Potential



The Development Framework - DRDLR Projects and Investment



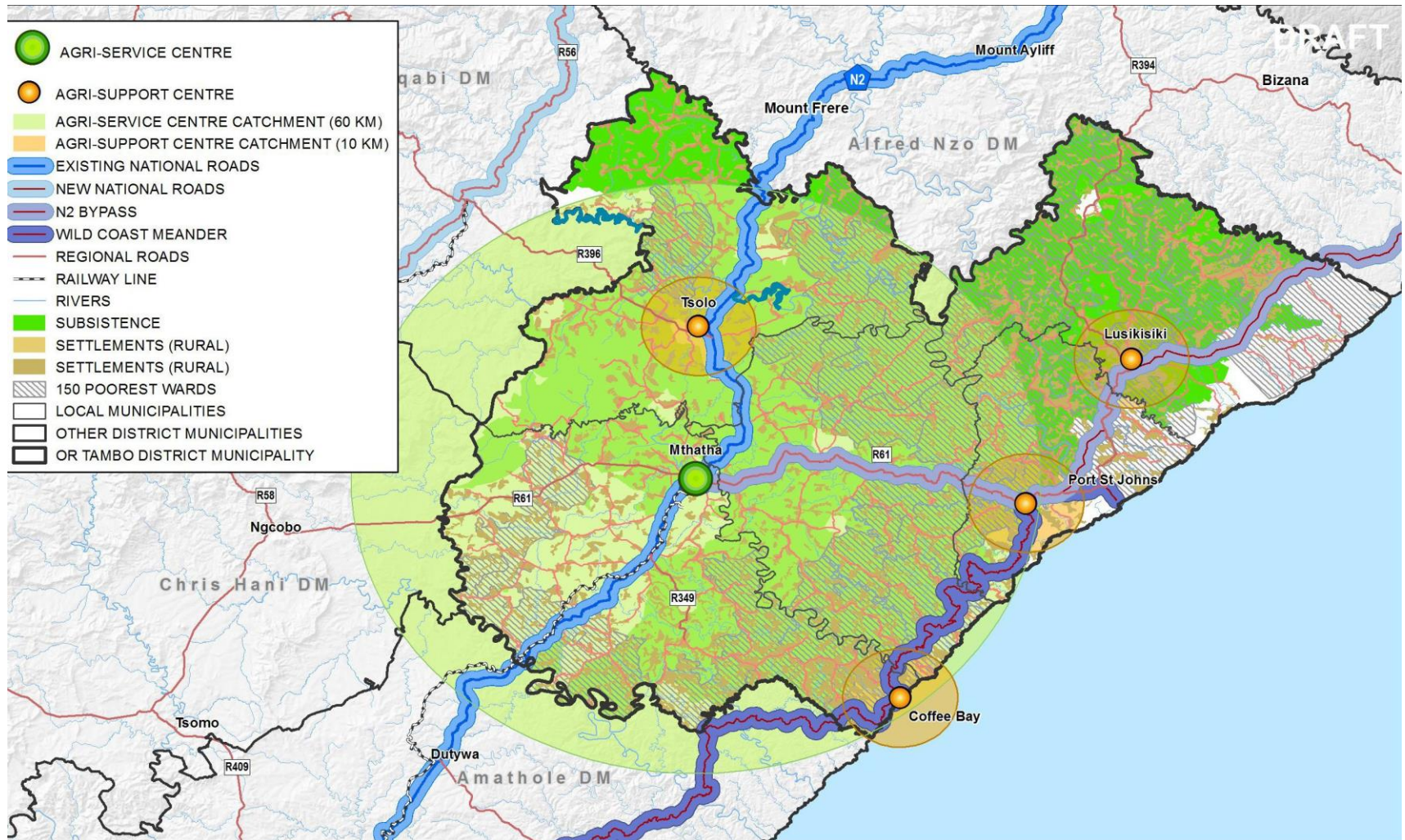
The 1st Draft Rural Development Plan – The Proposed Planning Approach



Scenario3
“Holistic integrated approach”

- SERVICE CENTER - multi commodity centres
- RESOURCE CENTRE – commodity specific resources
- RURAL ECONOMIC TRANSFORMATION AREAS – agriculture production areas

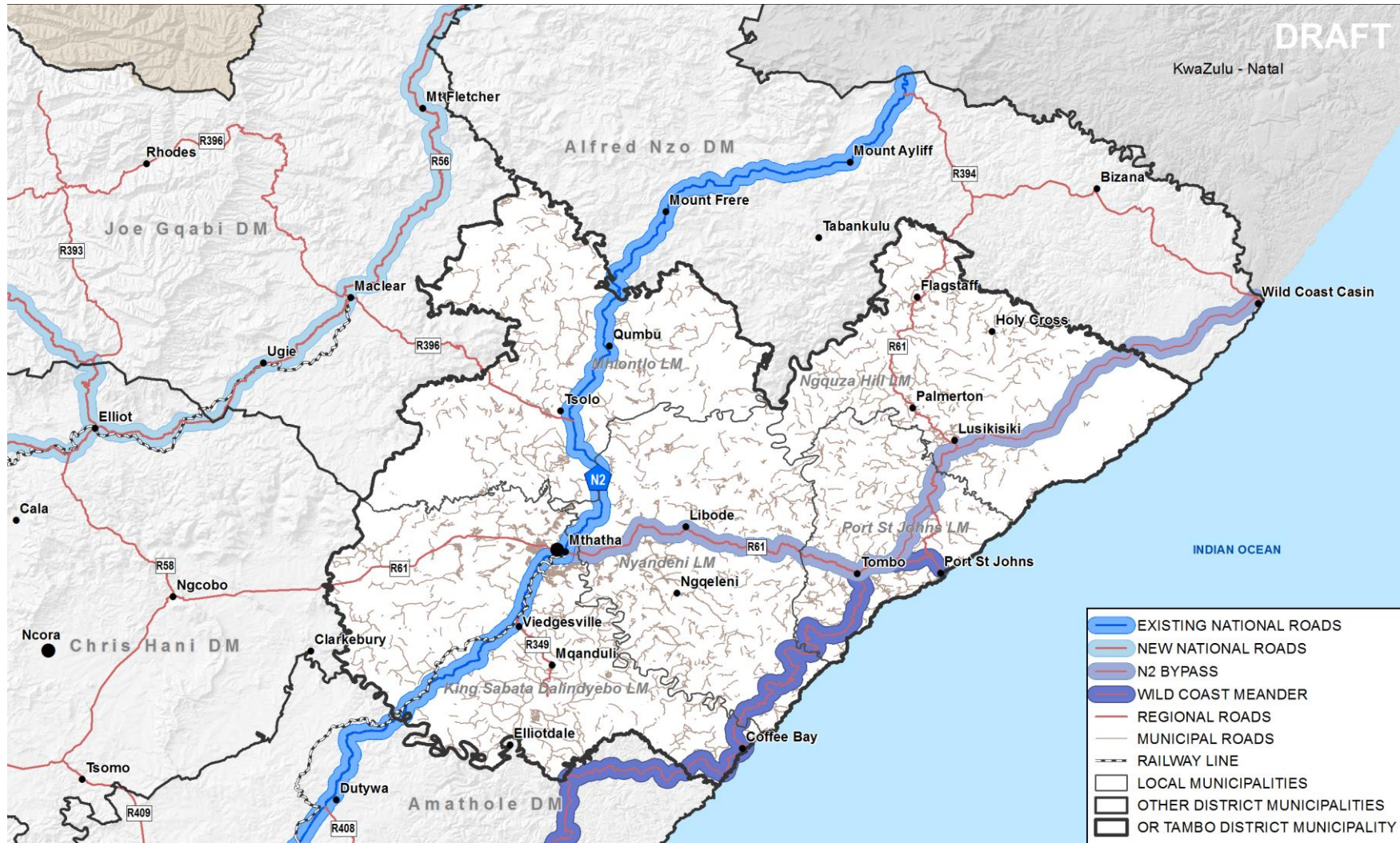
The 1st Draft Rural Development Plan, Rural Service & Support Centres & Rural Economic with Transformation Areas



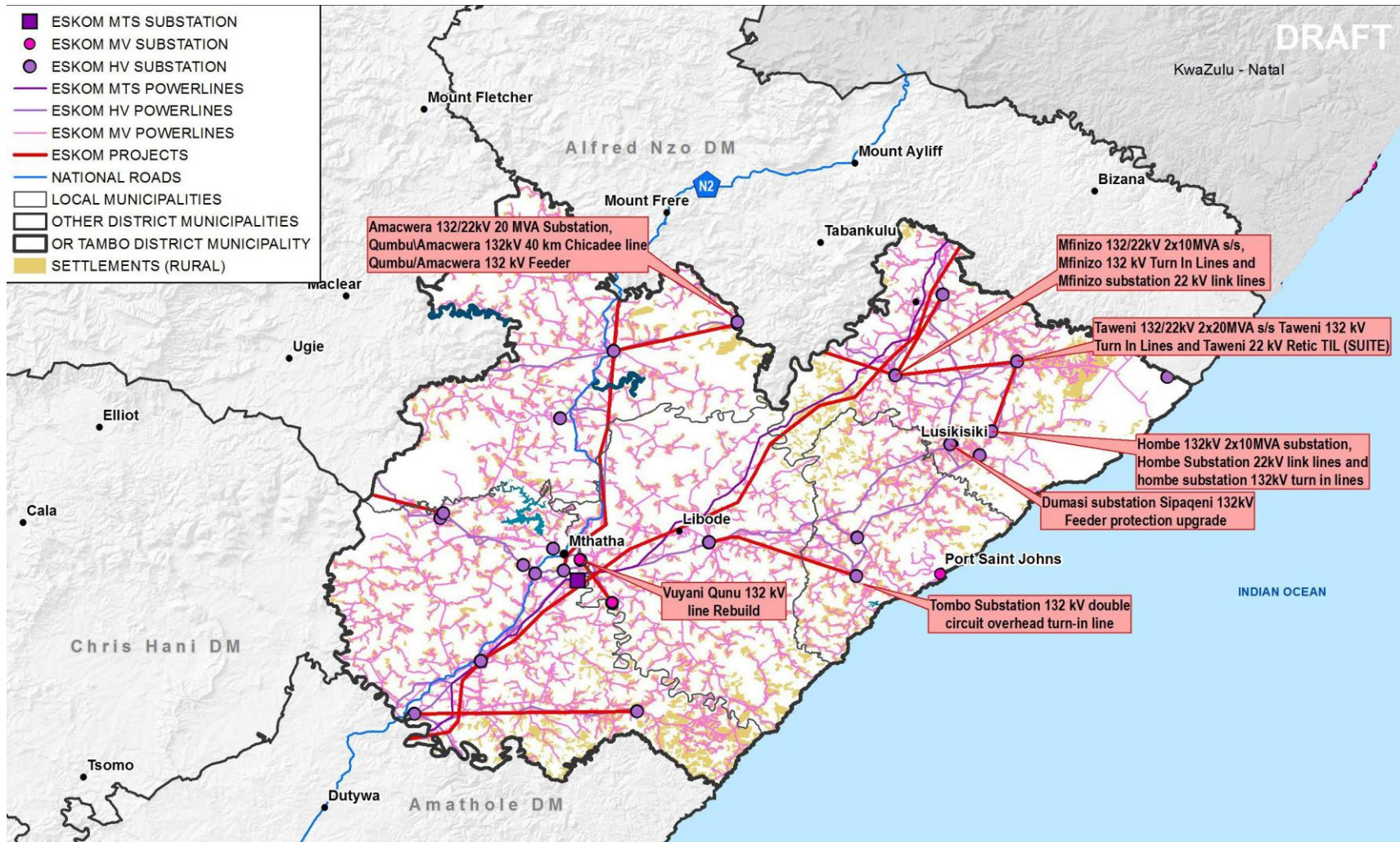
rural development
& land reform

Department:
Rural Development and Land Reform
REPUBLIC OF SOUTH AFRICA

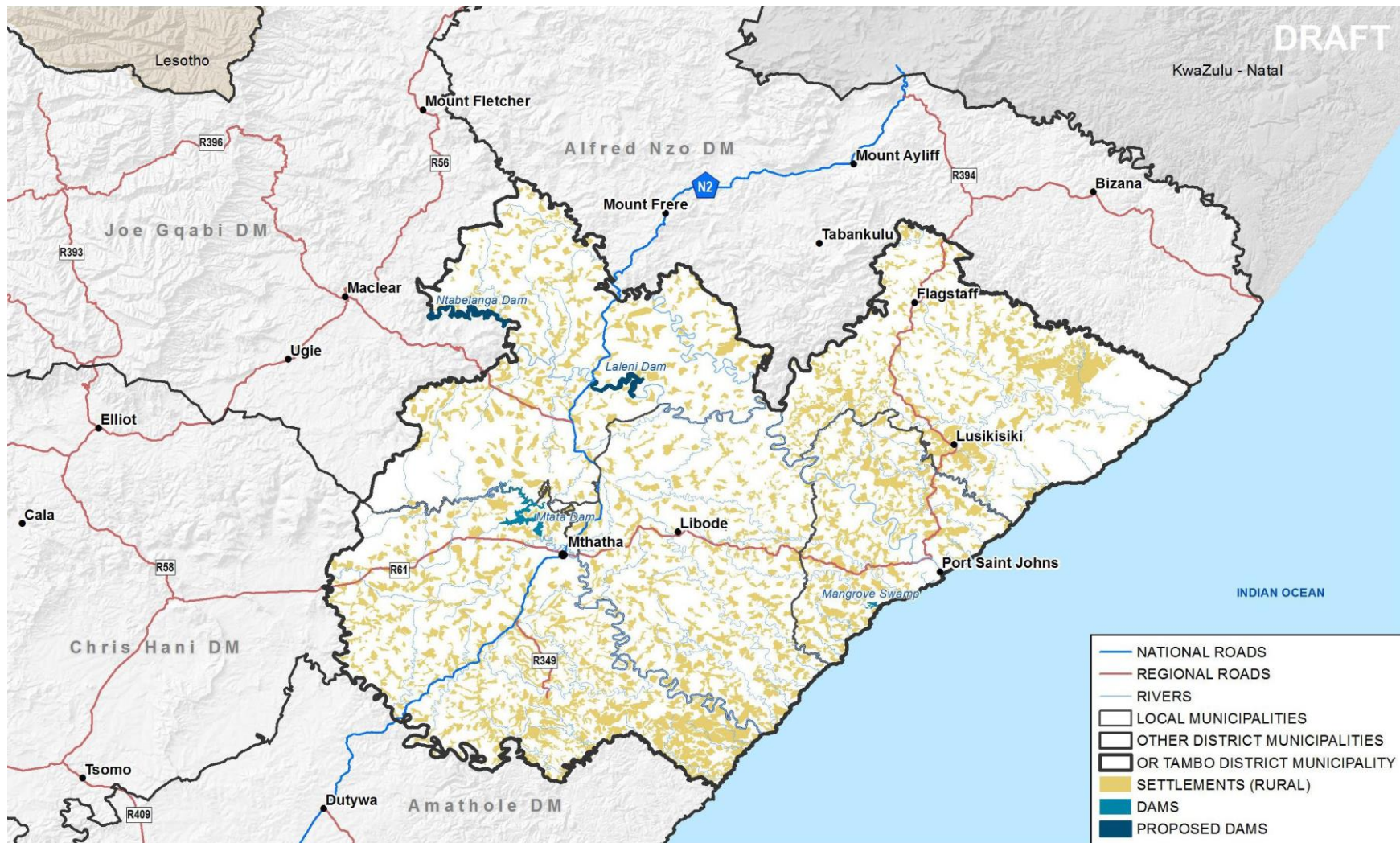
The 1st Draft Rural Development Plan and New Projects – Access and Mobility



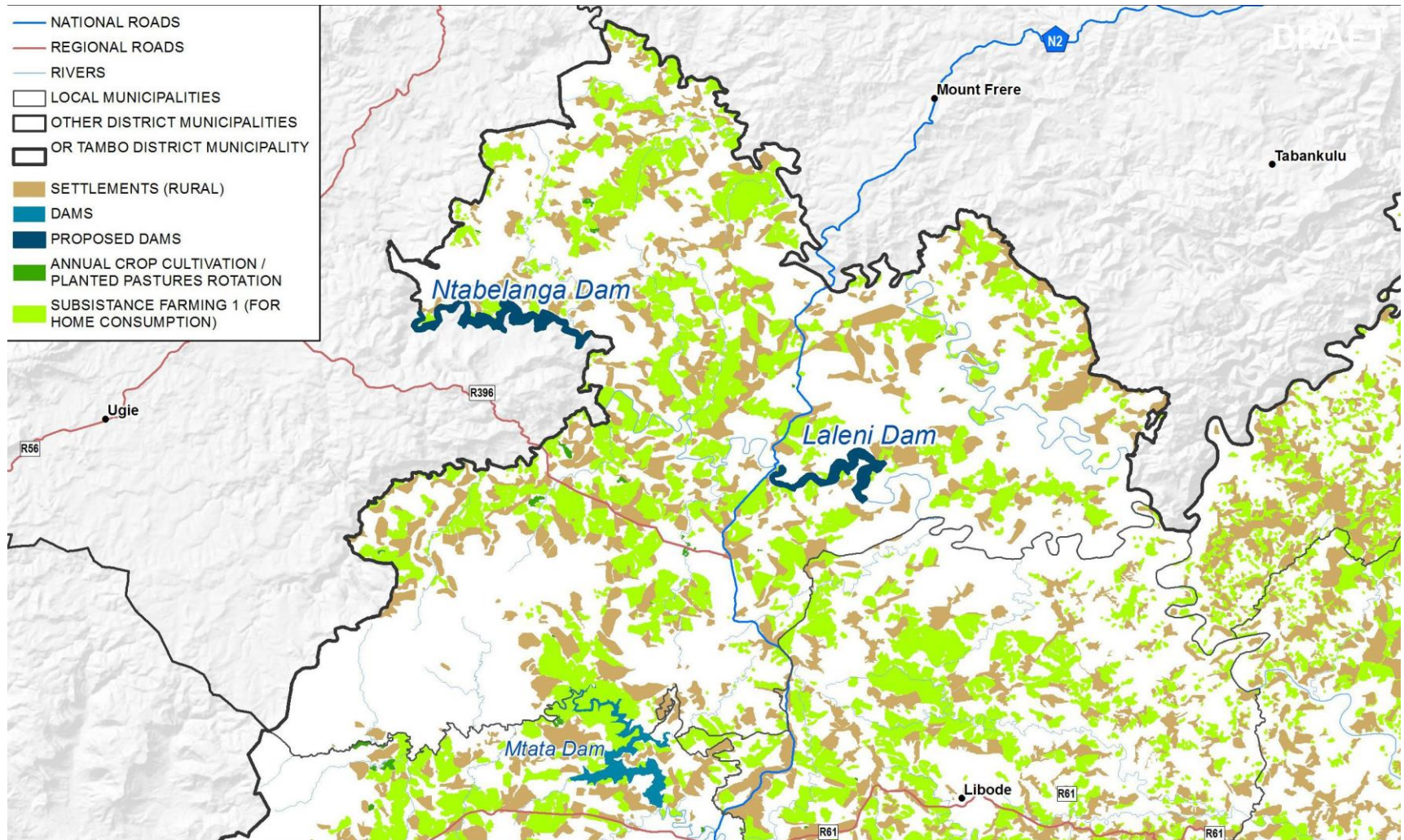
The 1st Draft Rural Development Plan and New Projects – Energy and Power



The 1st Draft Rural Development Plan and New Projects – New Dams



The Development Framework – Umzimvubu Basin : New Dams



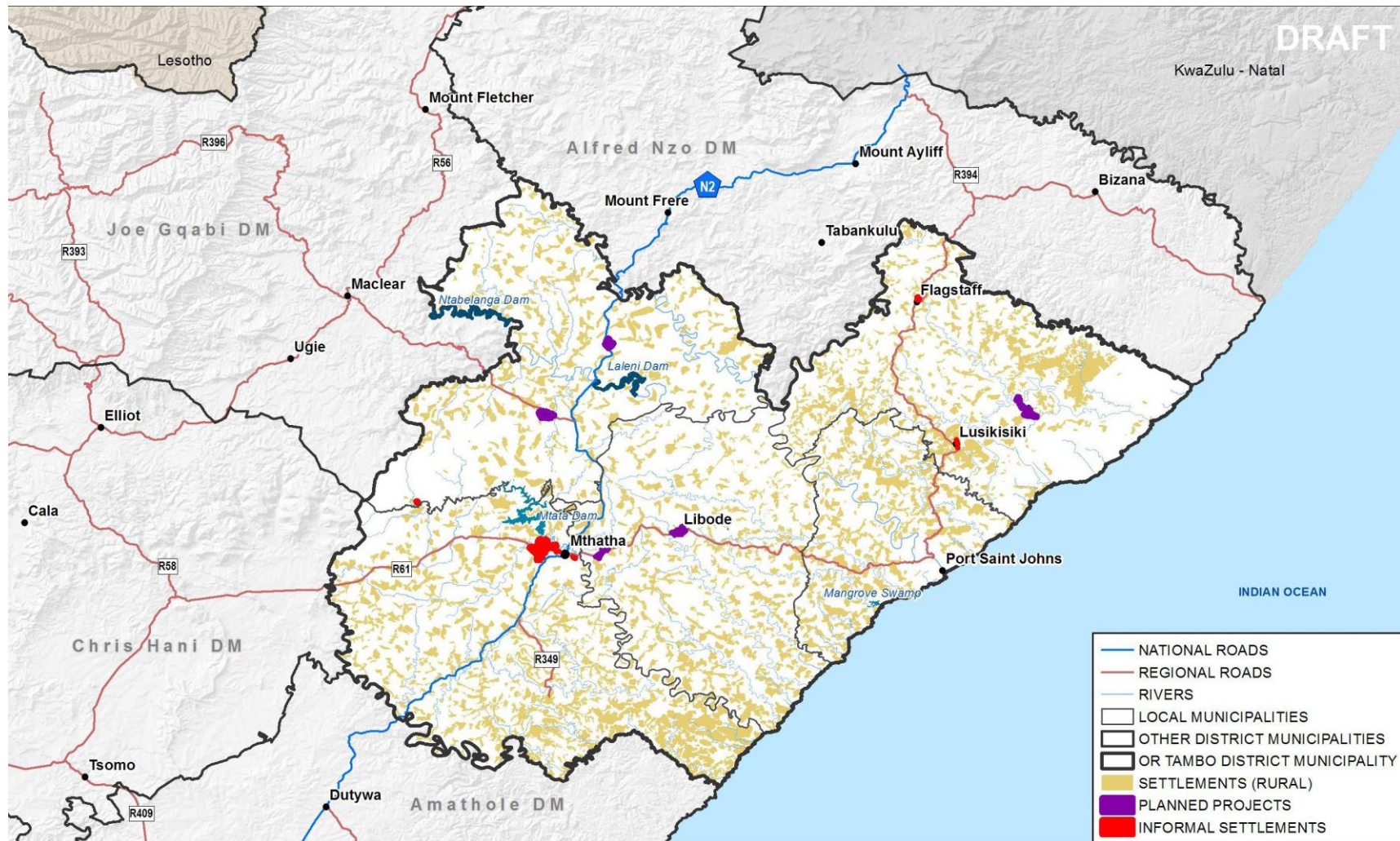
The 1st Draft Rural Development Plan and New Projects – TVET/FET Colleges



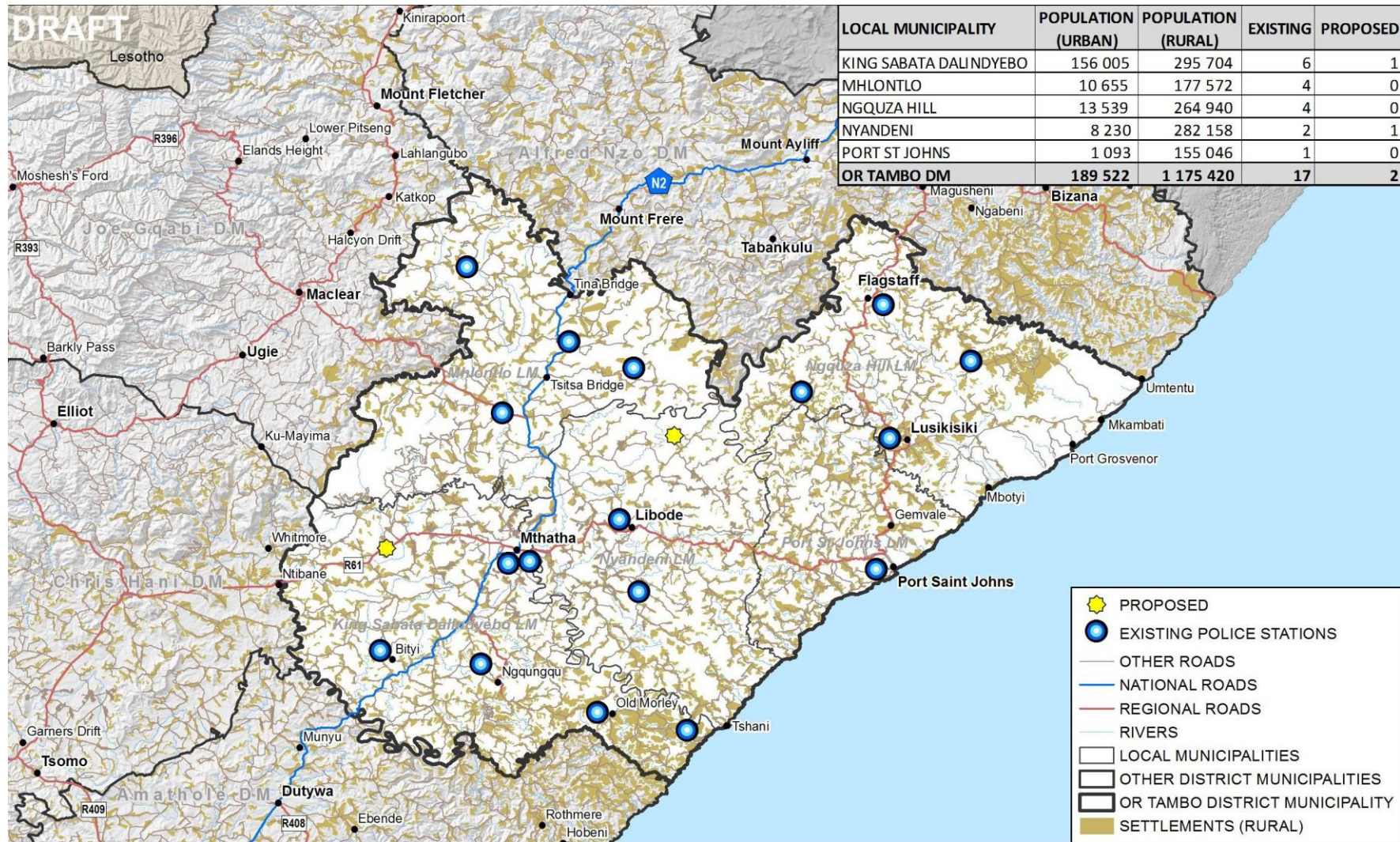
rural development
& land reform

Department:
Rural Development and Land Reform
REPUBLIC OF SOUTH AFRICA

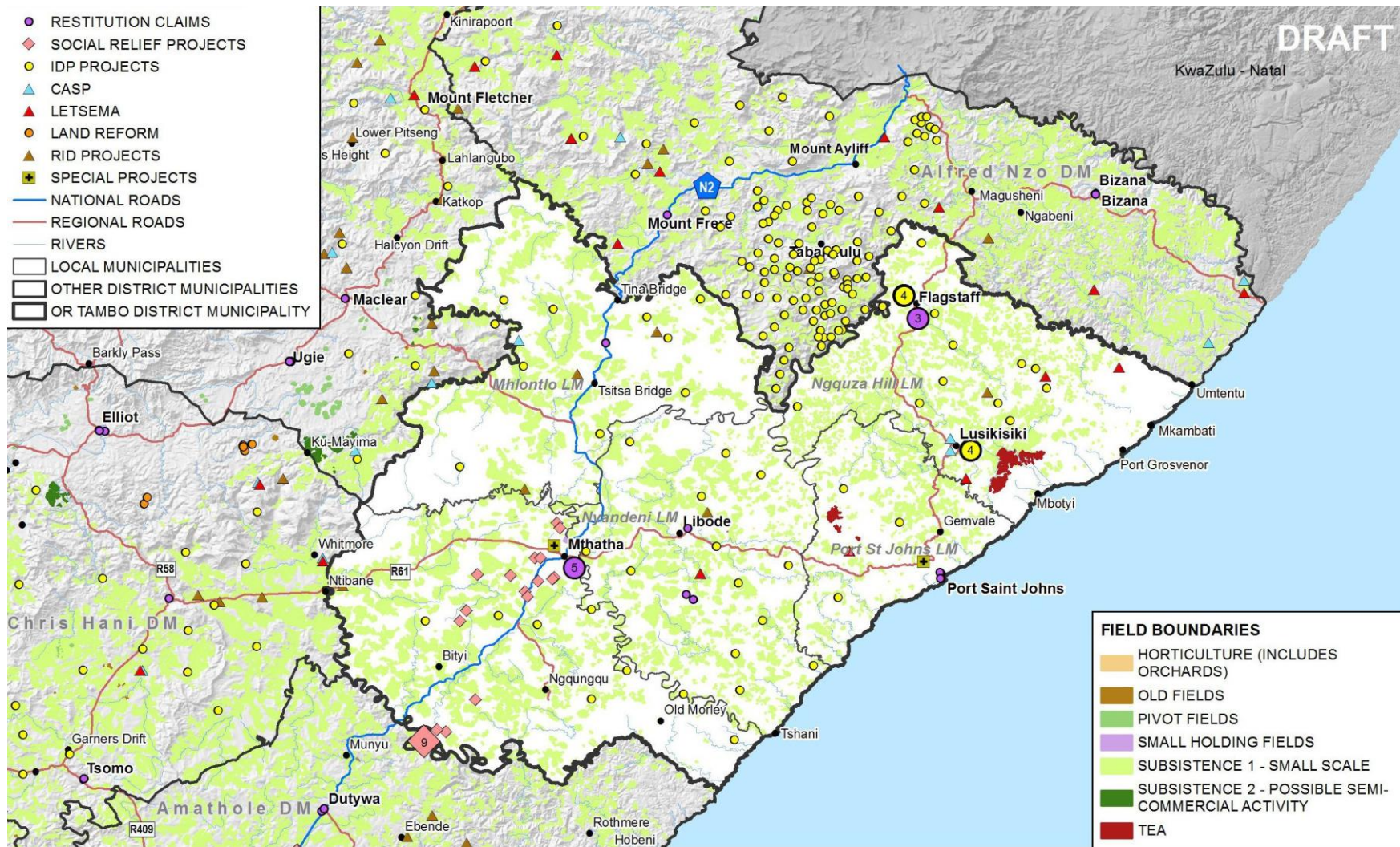
The 1st Draft Rural Development Plan and New Projects – Rural Housing



The 1st Draft Rural Development Plan and New Projects – Rural SAPS STATIONS



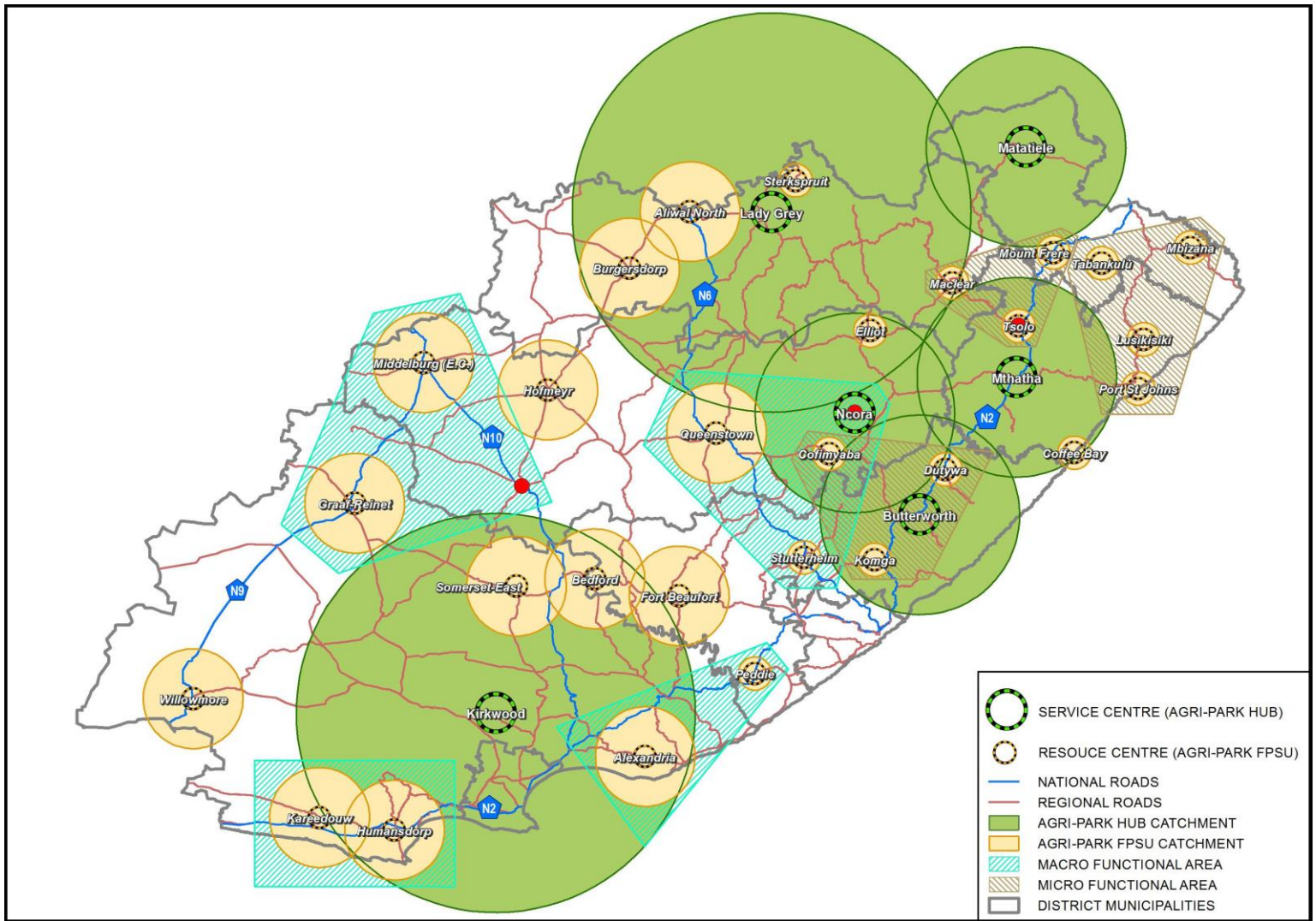
The 1st Draft Rural Development Plan and New Projects – DRDLR PROJECTS



The 1st Draft Rural Development Plan and New Projects – DRDLR PROJECTS							
District	Project Name	Project Type/Enterprise	Budget	Status	Winners Identified	Aligned to APAP	Distance in km
O R Tambo	Gxididi	crop production	R 918 400.00	Pre-Project		Yes: NDP Winner 2	25
	Grasslands CPA	crop production, Broiler	R 2 964 000.00	Pre-Project		Yes: NDP Winner 1 & 2	50
	Masikhuphuke 4H Youth CPA		R 968 453,00	Pre-Project		Yes: NDP Winner 2	50
	Ilinge CPA	Livestock Goat	R 1 400 000,00	Pre-Project		No	90
	Abambo Farms	Tunnels	R 1 247 497.02	Pre-Project		Yes: NDP Winner 2	90
	Living Dream farms	crop production	R 500 000.00	Pre-Project		Yes: NDP Winner 2	60
	Okuhle Kodwa farms	crop production	R 500 000.00	Pre-Project		Yes: NDP Winner 2	60
			R8 498 350.02				

District	Project Name	Project Type	Budget	Status	Winners Identified	Aligned to APAP	Distance
OR Tambo	Mbashe	RVCP	R 1 134 516.00	Pre-Project	Lucerne and Maize		65km
	Bumbane Fencing	AVMP	R 1 328 738.40	Execution	Maize and Soya		88km
	Bumbane Irrigation Scheme	AVMP	R 714 750.00	Pre-Project	Maize and Soya		88km
	Mhlontlo Stock Water Dams	Economic Infrastructure	R 892 232.00	Start Up	Red Meat		31km
	Anahlamvu T/A	Economic Infrastructure	R231 800.00	Closure	Vegetable and Maize		79km
	Matyeba Shearing Shed	Economic Infrastructure	R 660 000.00	Execution	Red meat and Cotton		31km
	Gogozayo Shearing Shed	Economic Infrastructure	R 660 000.00	Execution	Red meat and Cotton		16km
			R 15 832 036.40				

The Alignment with Provincial Functional Areas



Questions ? Thank you for your
time and input !

