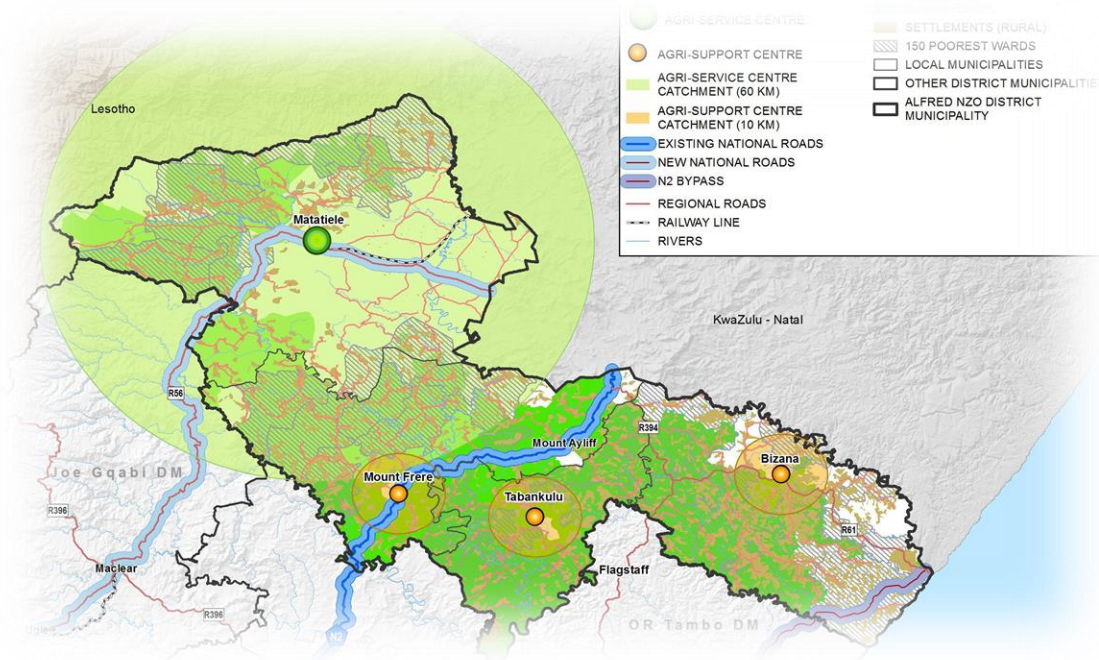


# RURAL DEVELOPMENT PLAN FOR THE ALFRED NZO DM

## The Stakeholder Participation Workshop

3 NOVEMBER 2015



rural development  
& land reform

Department:  
Rural Development and Land Reform  
REPUBLIC OF SOUTH AFRICA

# RURAL DEVELOPMENT PLAN FOR THE ALFRED NZO DM

Rowan van Gend

[rowan@udec.co.za](mailto:rowan@udec.co.za)

082 5696339

041 3743980



rural development  
& land reform  
Department:  
Rural Development and Land Reform  
REPUBLIC OF SOUTH AFRICA

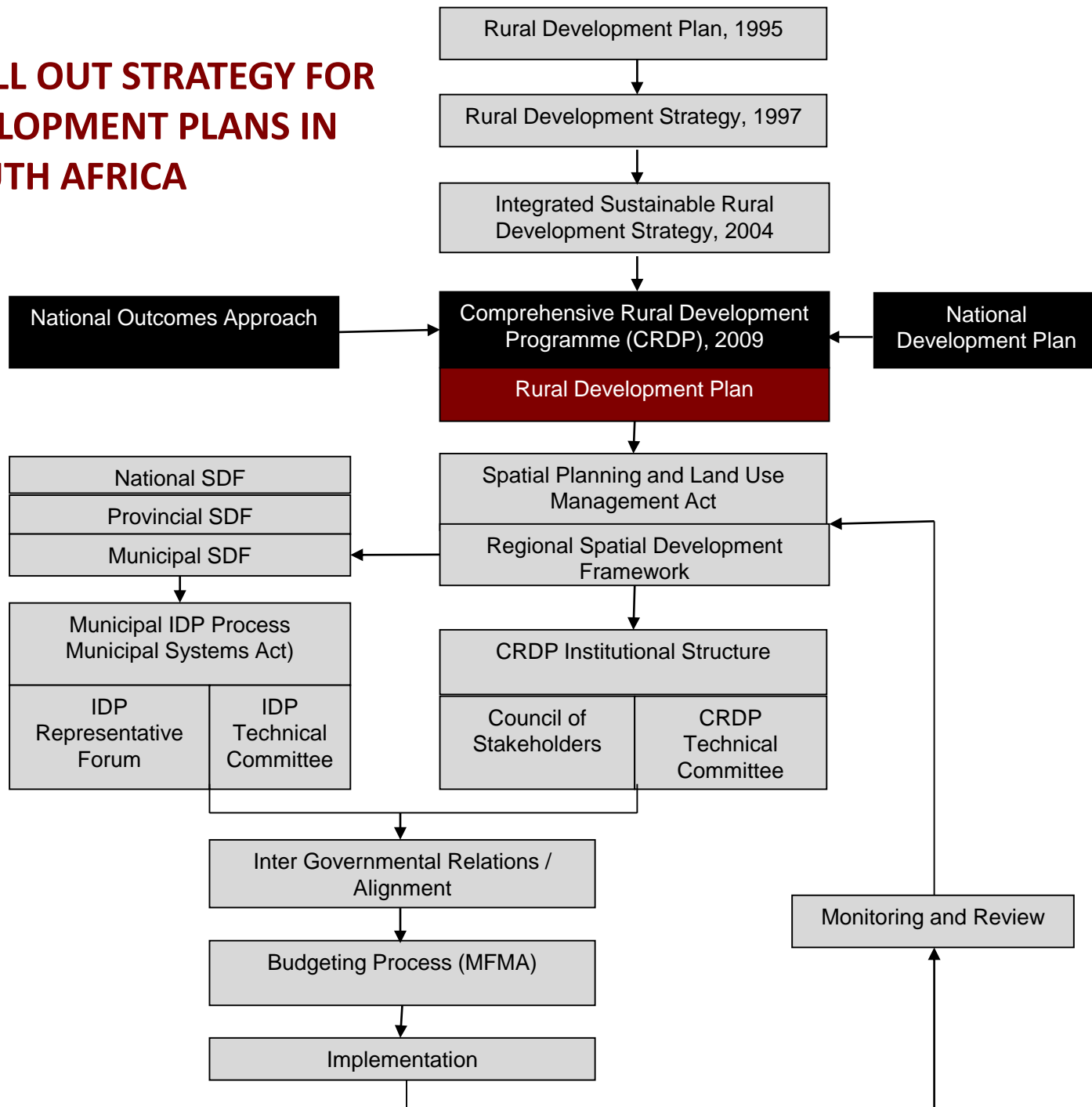
# The Presentation Format

- Background
- Strategic linkages
- Setting the Scene
- The Planning approach
- Spatial and Economic overview
- The Development Framework and strategy
- Functional areas
- The Rural development Plans for the District Municipalities
- Some Rural Development Initiatives and projects
- The Way Forward - District Municipalities workshops



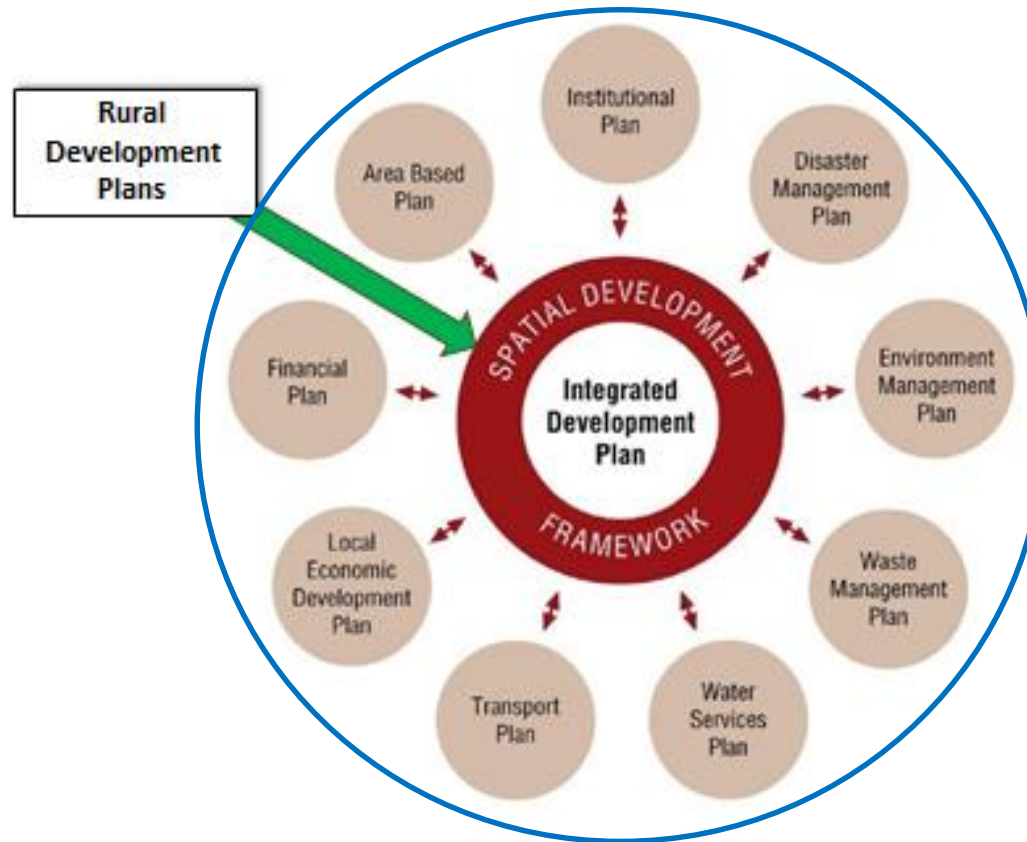
# PROPOSED ROLL OUT STRATEGY FOR RURAL DEVELOPMENT PLANS IN SOUTH AFRICA

## INSTITUTIONAL ALIGNMENT



# The Background

## 1. The Relationship between the RDP and the IDP



# The Strategic Linkages

## National Government

- *The NDP aims to eradicate poverty, increase employment and reduce inequality by 2030*
- *Priority areas, inter alia rural development, land reform and food security*
- *MTSF (2014 to 2019)- Outcome 7 -“Vibrant equitable sustainable rural communities contributing towards food security for all”*
- *SIP14 Agri- logistics and rural infrastructure*

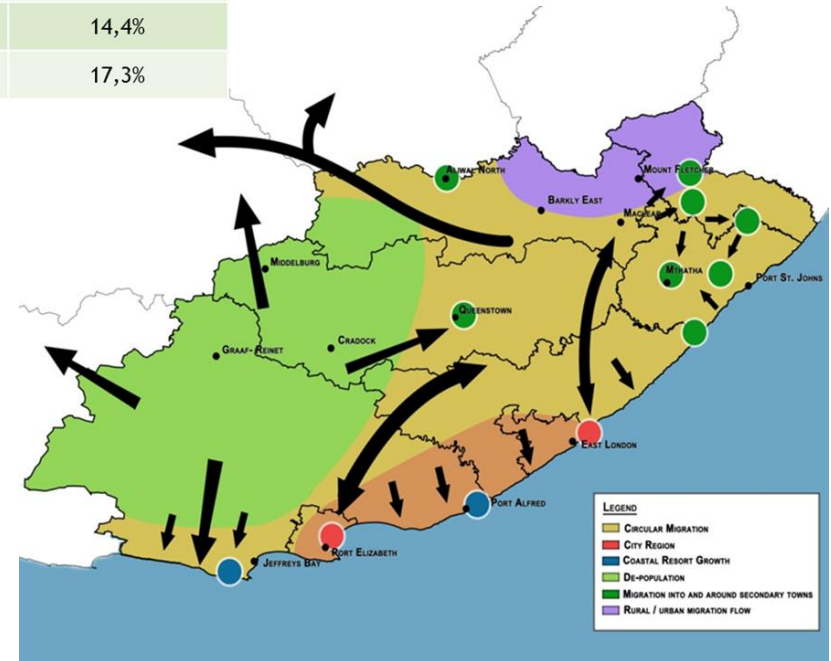
## Provincial Government

- *PDP proposes, inter alia “a more serious drive to transform and develop rural areas...”*
- *PMTSF (2014 to 2019)- Priority 8,3 -“Stimulating rural development, land reform and food security”*



# Setting the Scene The Rural Context

	2001	2011	Rural Growth	Urban Growth
South Africa	19 026 764	19 210 892	1,0%	26,2%
Eastern Cape	3 777 863	3 576 669	-5,3%	19,4%
Sarah Baartman	89 286	77 661	-13,0%	24,8%
Amathole	804 804	692 327	-14,0%	23,4%
Chris Hani	535 695	498 965	-6,9%	11,8%
Joe Gqabi	239 471	222 202	-7,2%	24,1%
O.R. Tambo	1 168 557	1 175 420	0,6%	49,8%
Alfred Nzo	742 295	749 286	0,9%	69,2%
Nelson Mandela Bay	22 226	26 846	20,8%	14,4%
Buffalo City	175 528	133 962	-23,7%	17,3%



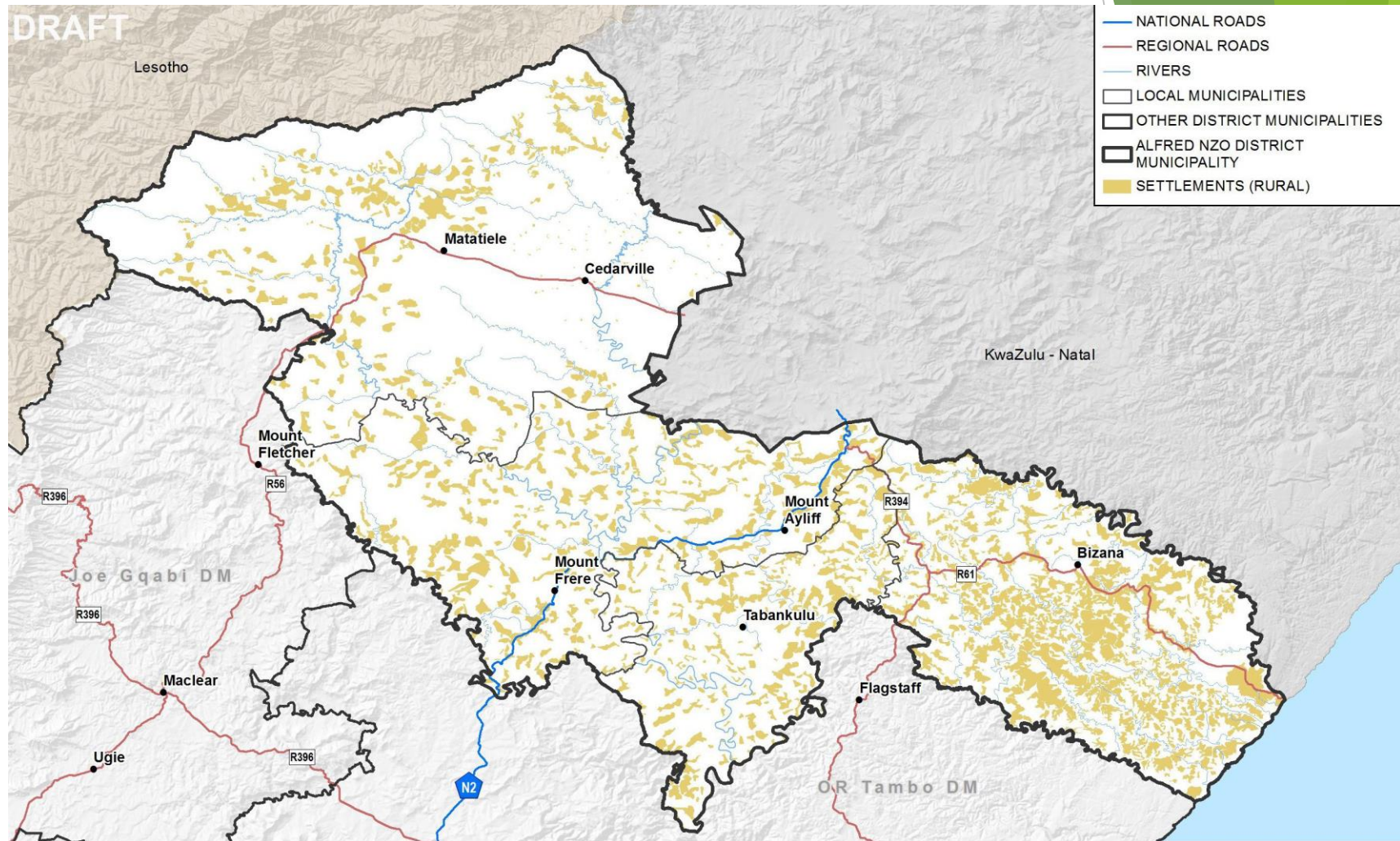
# Setting the Scene – Alfred Nzo Demographics

	Total	Growth on Previous Period	Provincial Growth Comparison
Population	803 150 (2013)	0.53% (2012) 2.64% (2008)	↓ ↑
Urban	52 059 (2011)	69.2% (2001)	↑
Rural	749 286(2011)	0.9% (2001)	↑
Density	74.8 persons/km <sup>2</sup>	-	↓
Education			
No Education	14.8%	↓	-
Matric	13.4%	↑	
Higher Education	5.8%	↓	
Socio-Economic Quintile	1	-	=
Gini Coefficient	72.65 (2013)	-	↓
Unemployment Rate	26.77% (2013)	↑	↓
Formal Employment	249 621 (2013)	-1.5% (2012)	↓
Informal employment	132 425 (2013)	10.1% (2012)	↓



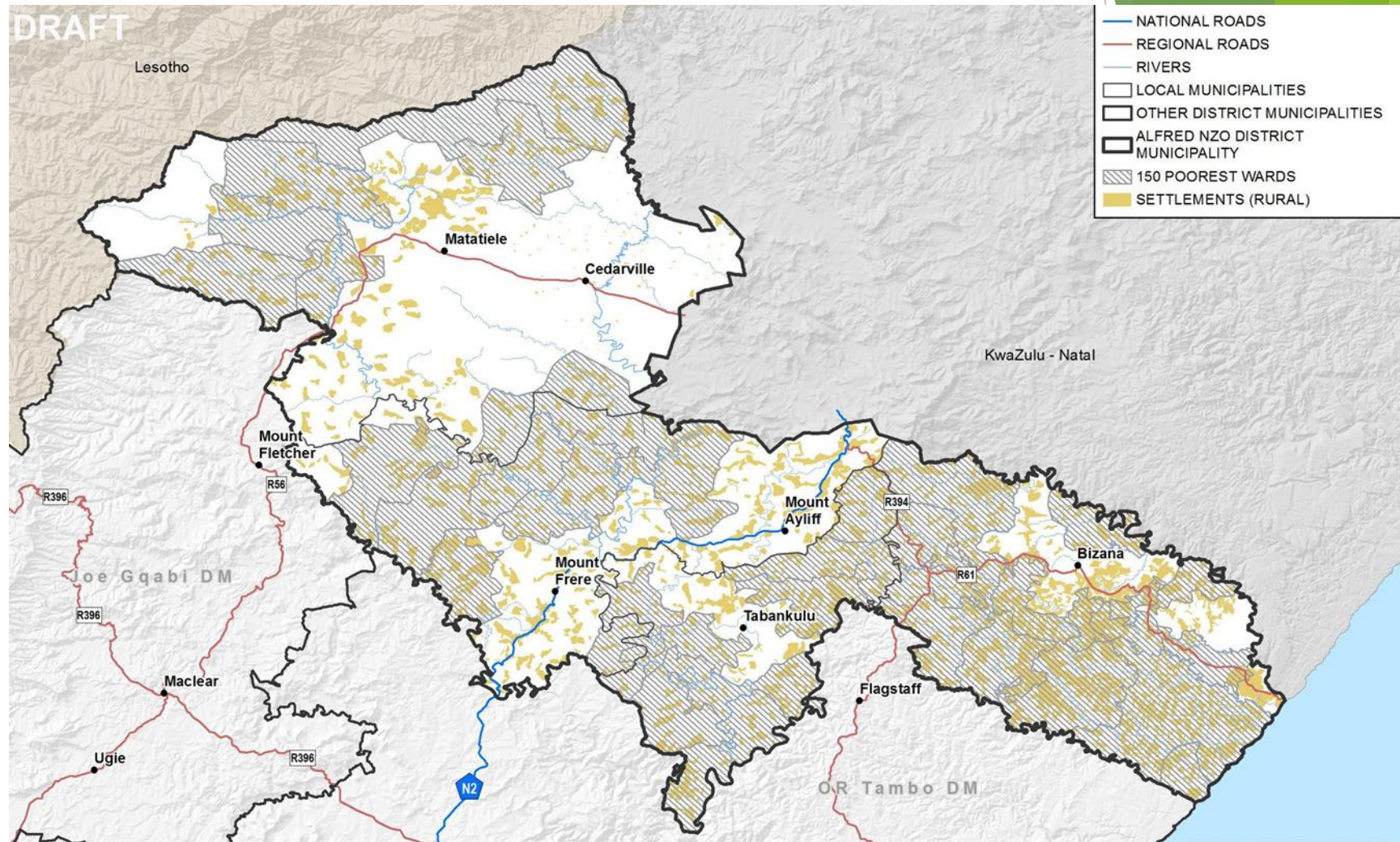


# Setting the Scene

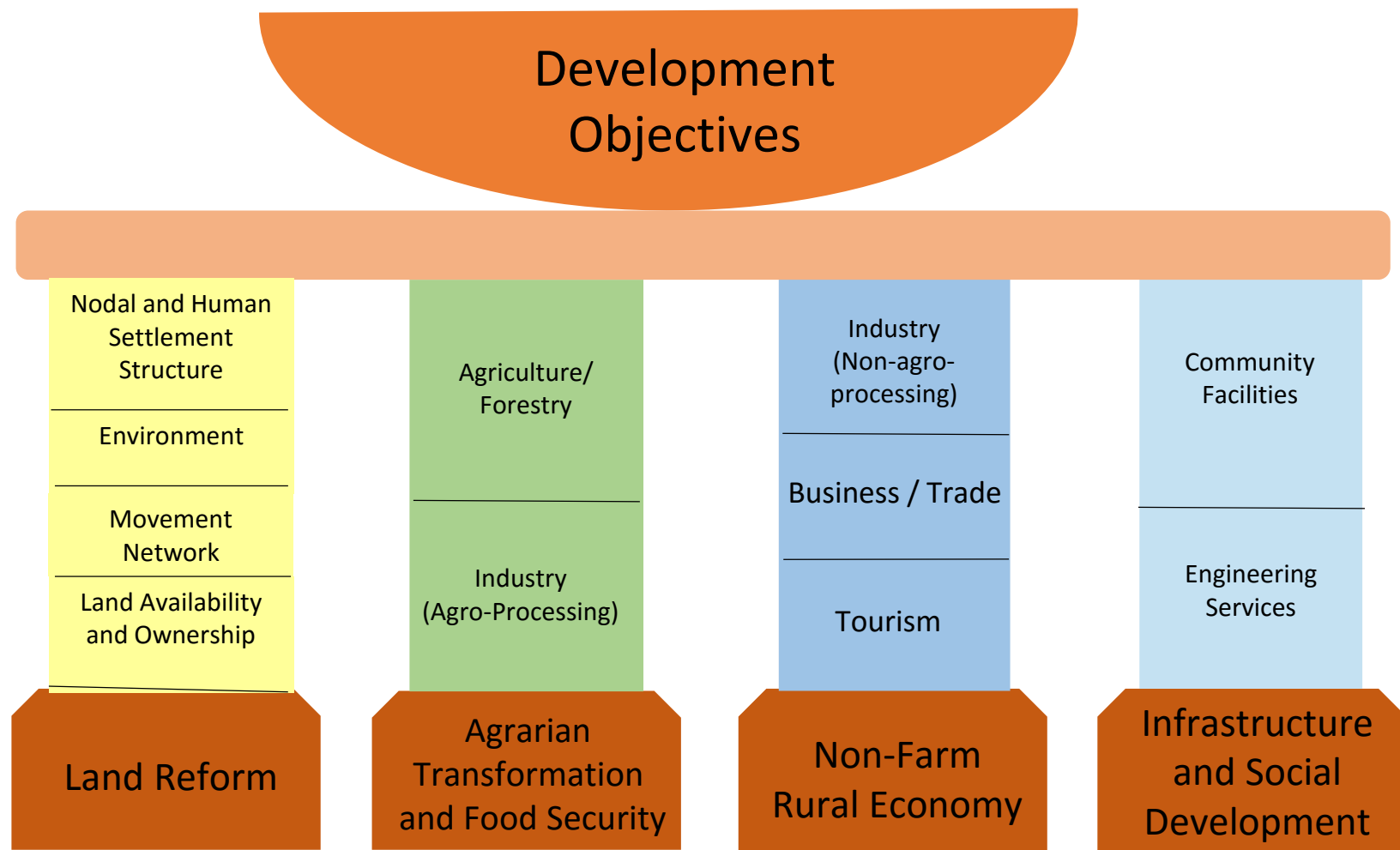




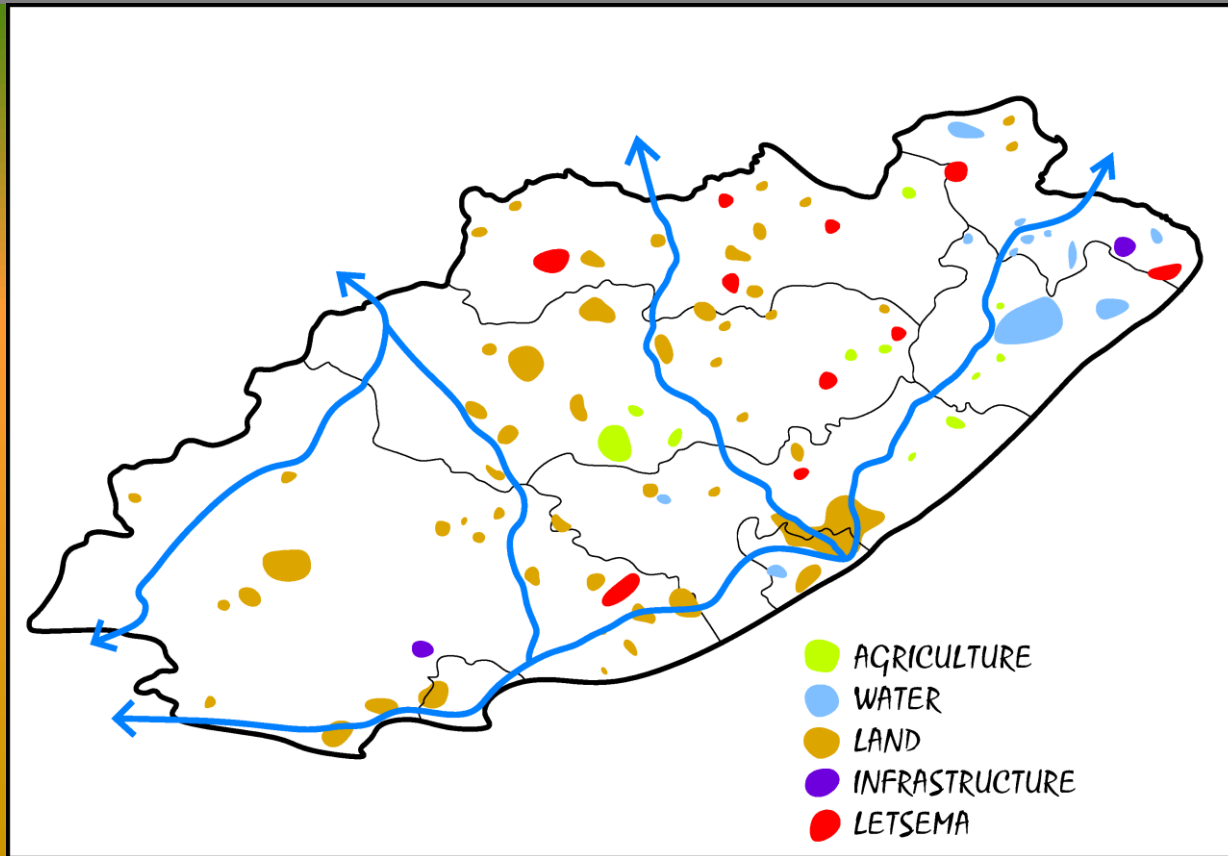
# The Poverty Zones - Poorest Wards



# The Development Framework Objectives and Pillars



# The 1<sup>st</sup> Draft Rural Development Plan – The Approach

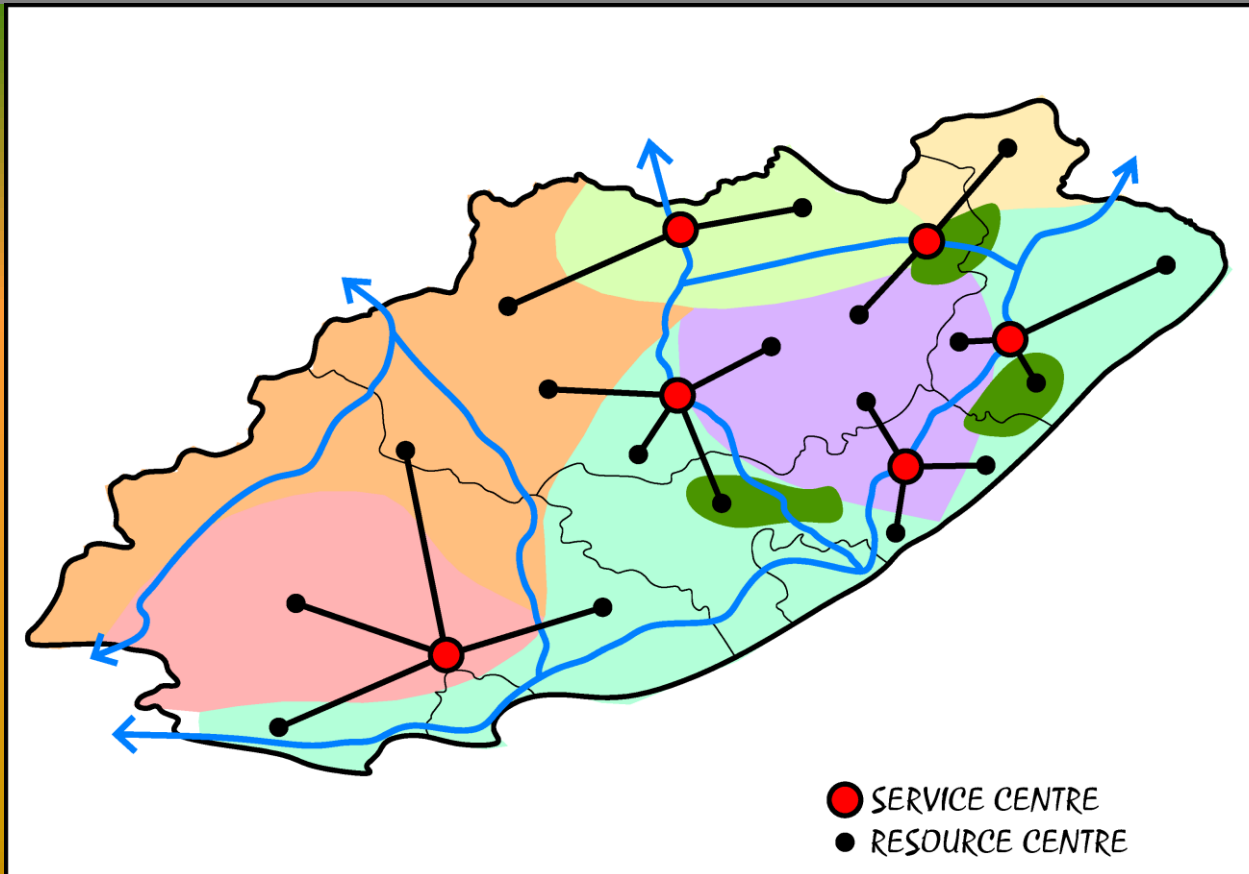


**Scenario 1:**  
**"Business as usual"**

## Philosophy

“ The scenario identifies the economic potential of agriculture commodities and identifies the best location for investment to maximise the development of rural communities, by providing economic opportunity for employment, basic services in areas with high agriculture potential.”

# The 1<sup>st</sup> Draft Rural Development Plan – The Approach



**Scenario3**  
**"Holistic integrated approach"**

SERVICE CENTER  
RESOURCE CENTRE  
RURAL ECONOMIC TRANSFORMATION AREAS



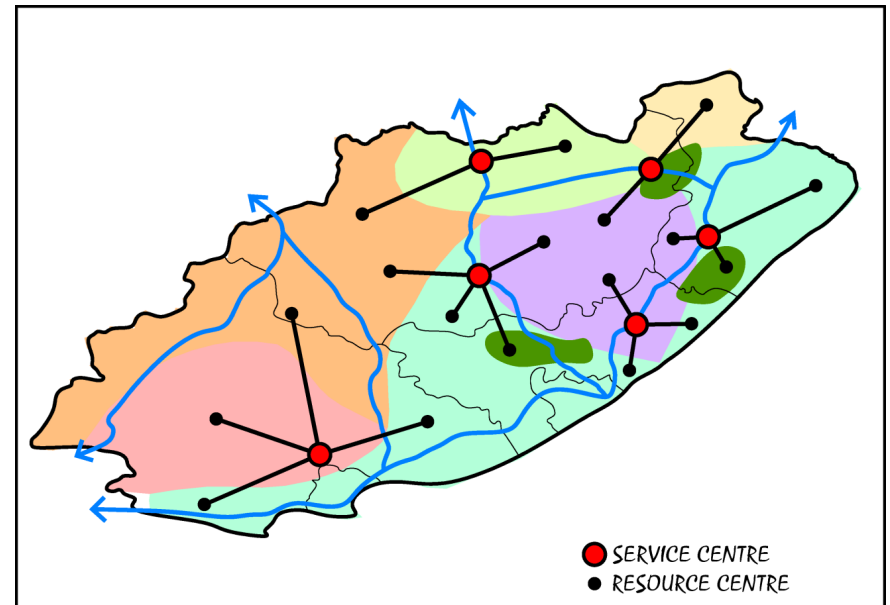
# Development Scenario - Holistic Integrated Approach

## Advantages:

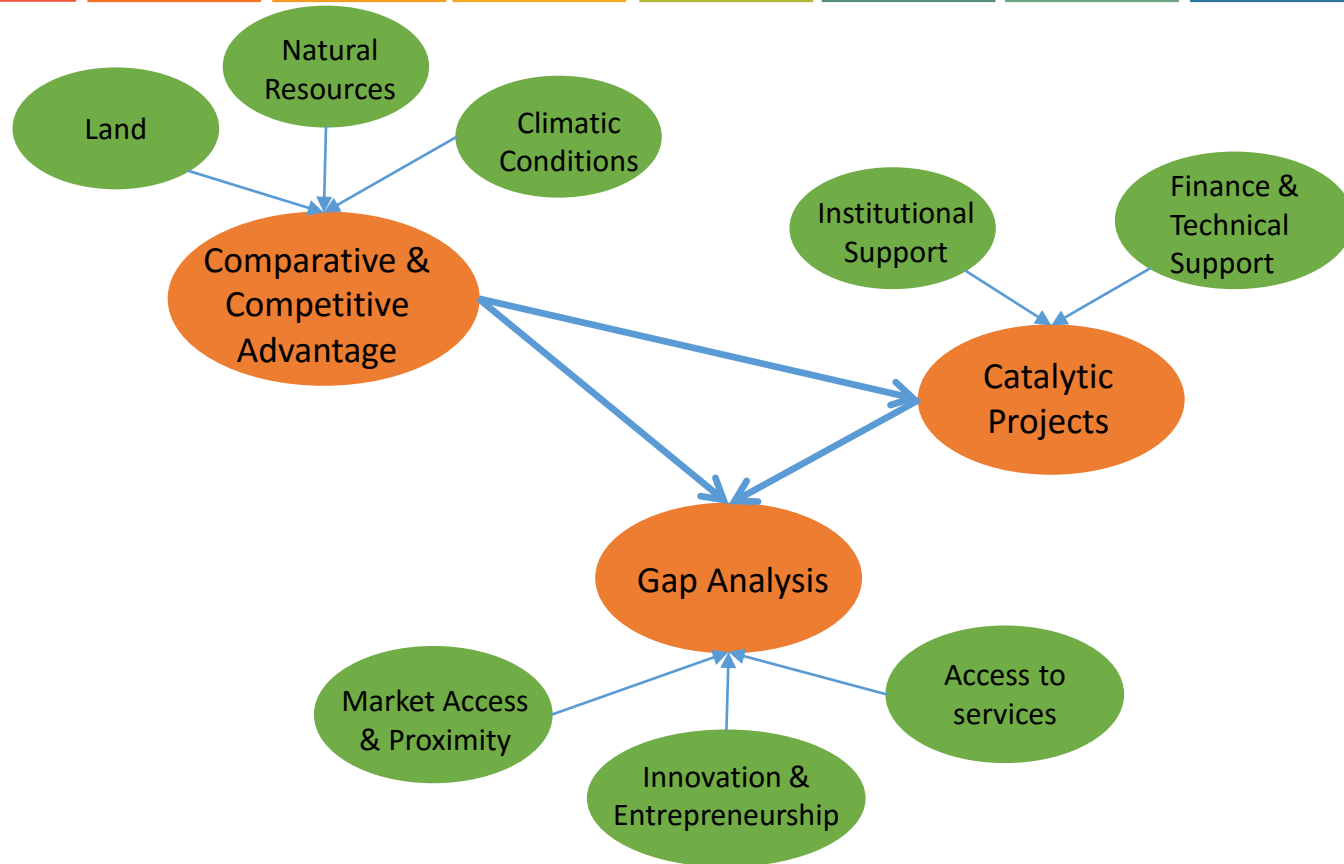
- Investment is maximised
- Expertise, skills, education and training is dispersed
- Logistics, transport, mechanisation resources, managerial skills are shared
- The impact of fluctuating markets and natural disasters are minimised and managed.
- Seasonal migration of labour is managed

## Disadvantages:

- New infrastructure is costly
- Research and development is time consuming
- Alignment of government programs are essential



# The Development Framework – Opportunity Identification - New





# Other Agri-Opportunities – Alfred Nzo

Other Agri-Projects	Opportunities
<b>Forestry</b>	<ul style="list-style-type: none"> <li>• Sinawo Community Forest plantation of 5 550ha</li> <li>• Community owned forestry plantation enterprises</li> <li>• Alien invasive plant clearing</li> </ul>
<b>Commercial, Cooperative and Small-Scale</b>	<ul style="list-style-type: none"> <li>• Develop commercial, small-scale and cooperative wool production initiatives across the Alfred Nzo DM.</li> <li>• Develop commercial, small-scale and cooperative cattle production initiatives across the Alfred Nzo DM. Excluding around Matatiele to the east.</li> <li>• Develop commercial, small-scale and tourism-focused citrus production along the coastal regions of the province.</li> </ul>
<b>Agro-Processing</b>	<ul style="list-style-type: none"> <li>• Support Maize and sorghum production, marketing and value-adding through the provision of inputs, mechanisation, finance, technical support, storage, milling and markets</li> </ul>



# Non-Farm Rural Opportunity Slide – Alfred Nzo

Non-Farm	Opportunities
<b>Business and Trade Services</b>	<ul style="list-style-type: none"><li>• Expand rural retail and commercial services in selected rural nodes.</li></ul>
<b>Tourism</b>	<ul style="list-style-type: none"><li>• Hiking, canoeing, mountain biking at the Wild Coast</li><li>• Fly fishing</li><li>• Heritage sites</li><li>• Mkhambati Nature Reserve</li><li>• Cultural sites</li><li>• Development of Umzimvubu Dam (water activities)</li><li>• MICE facility development.</li></ul>
<b>Renewable Energy</b>	<ul style="list-style-type: none"><li>• Umzimvubu Hydroelectric Dam</li><li>• Provision of downstream services (security, fencing, maintenance, logistics)</li></ul>



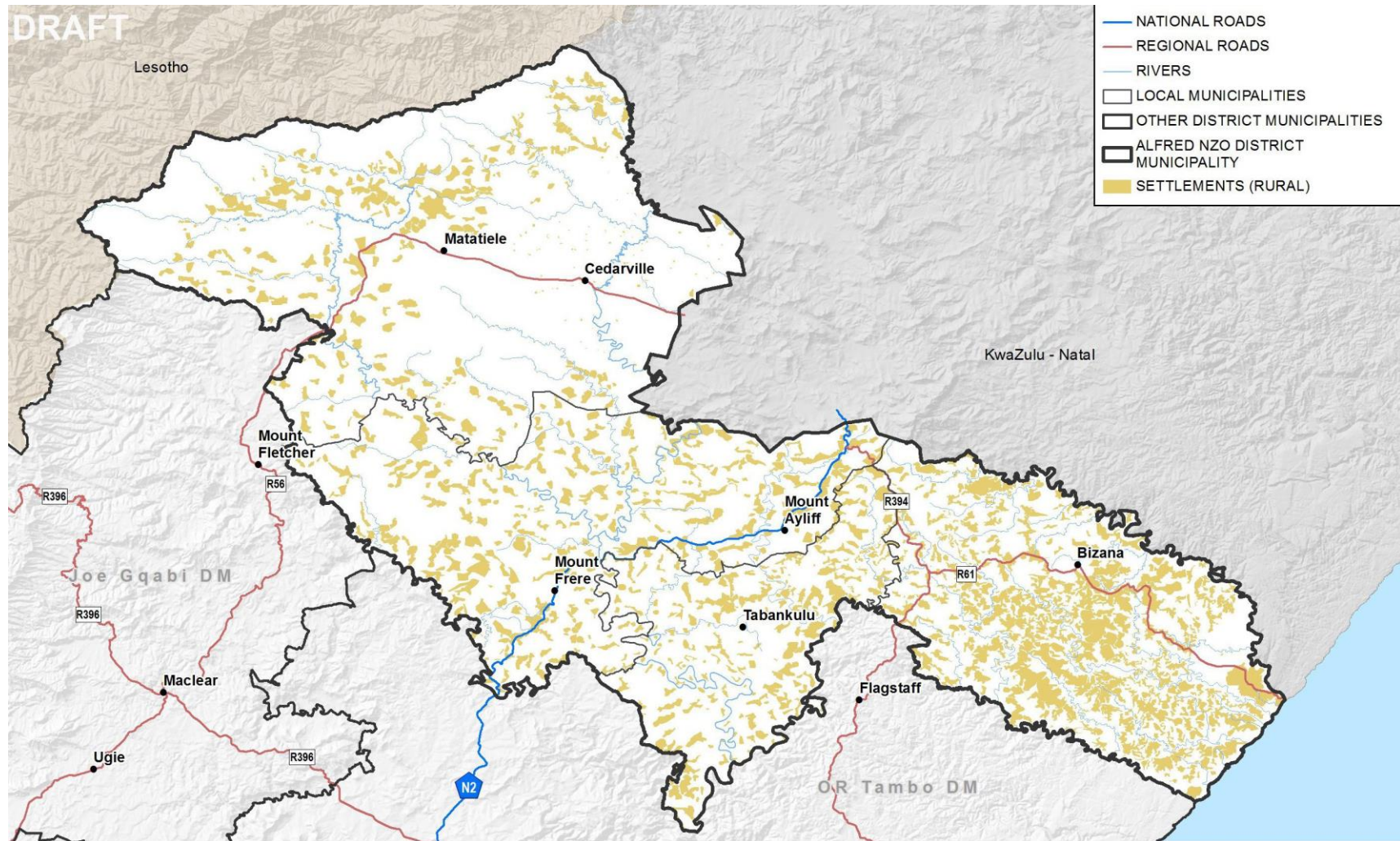
# Informants for Selecting Suitable Sites

## **RURAL SERVICE CENTRES - Rural Agriculture Development**

- Socio Economic Status
- Land Ownership
- Average Rainfall
- Average Temperature
- Vegetation
- Proximity to rivers and dams
- Proximity to roads
- Proximity to railway lines
- Proximity to SIPS
- Proximity to EDC's
- Proximity to cities and towns

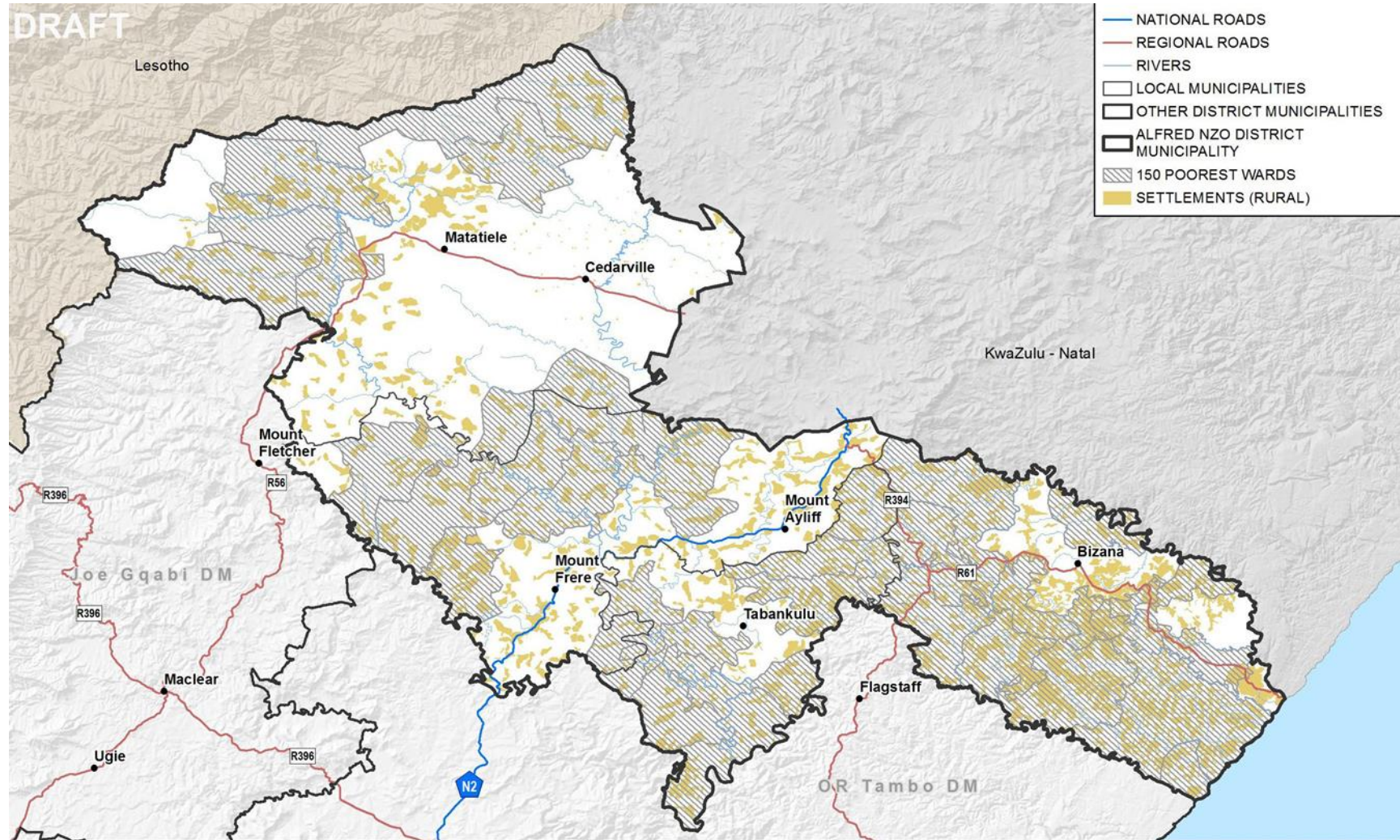


# The Development Framework – Settlement Patterns



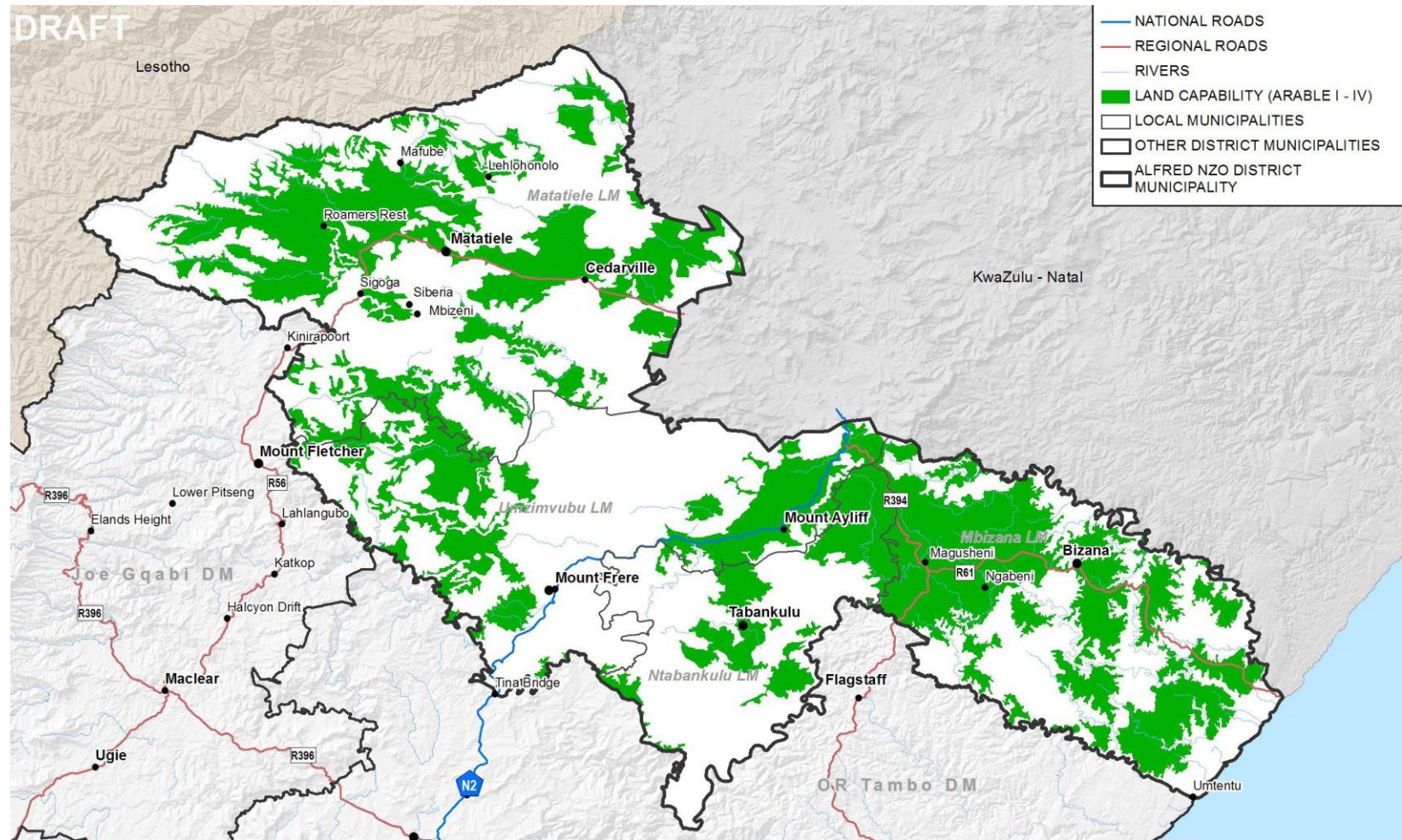


# The Development Framework – The Poverty Zones



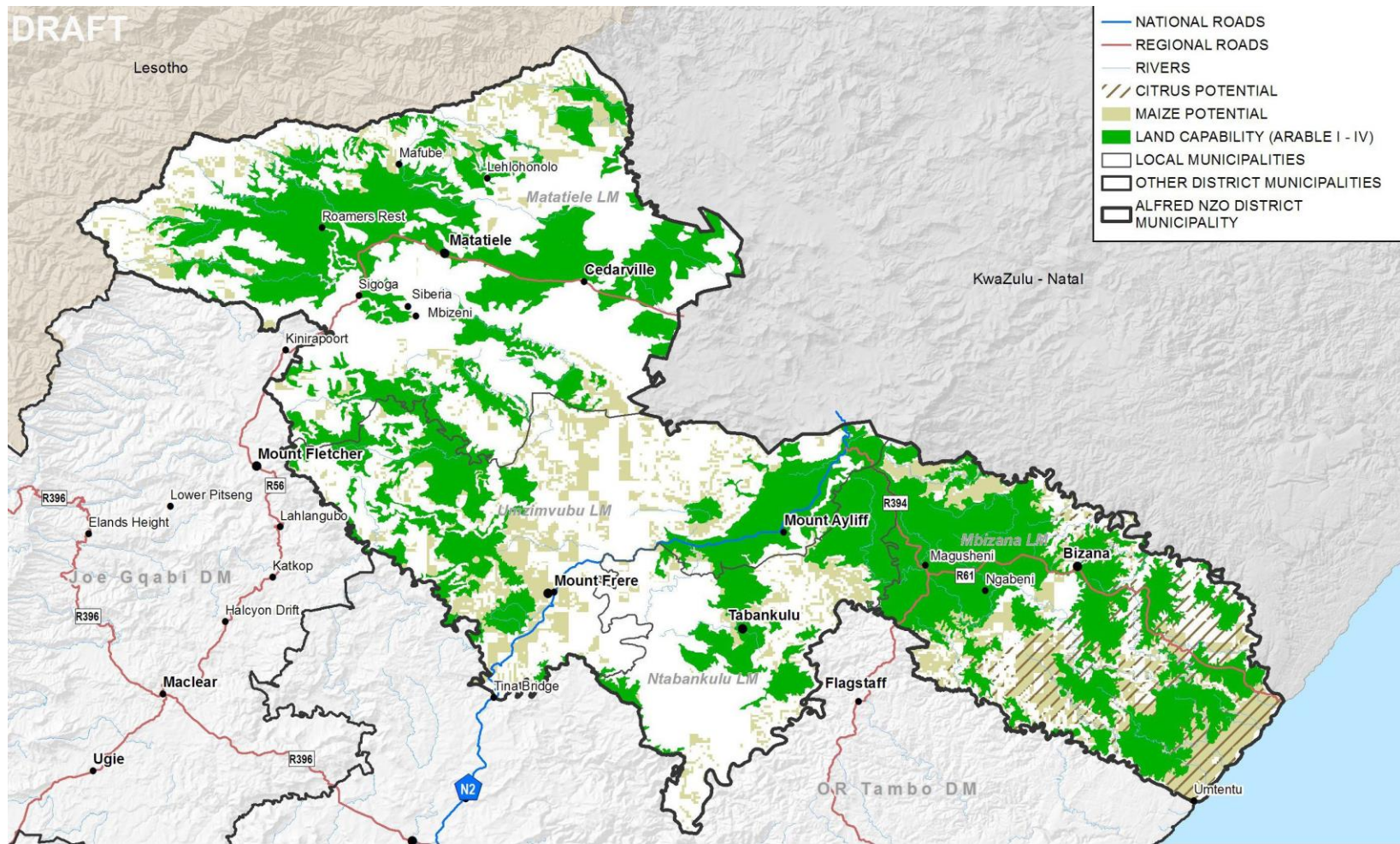


# The Development Framework – Land Capability





# The Development Framework – Commodity Potential : Crops



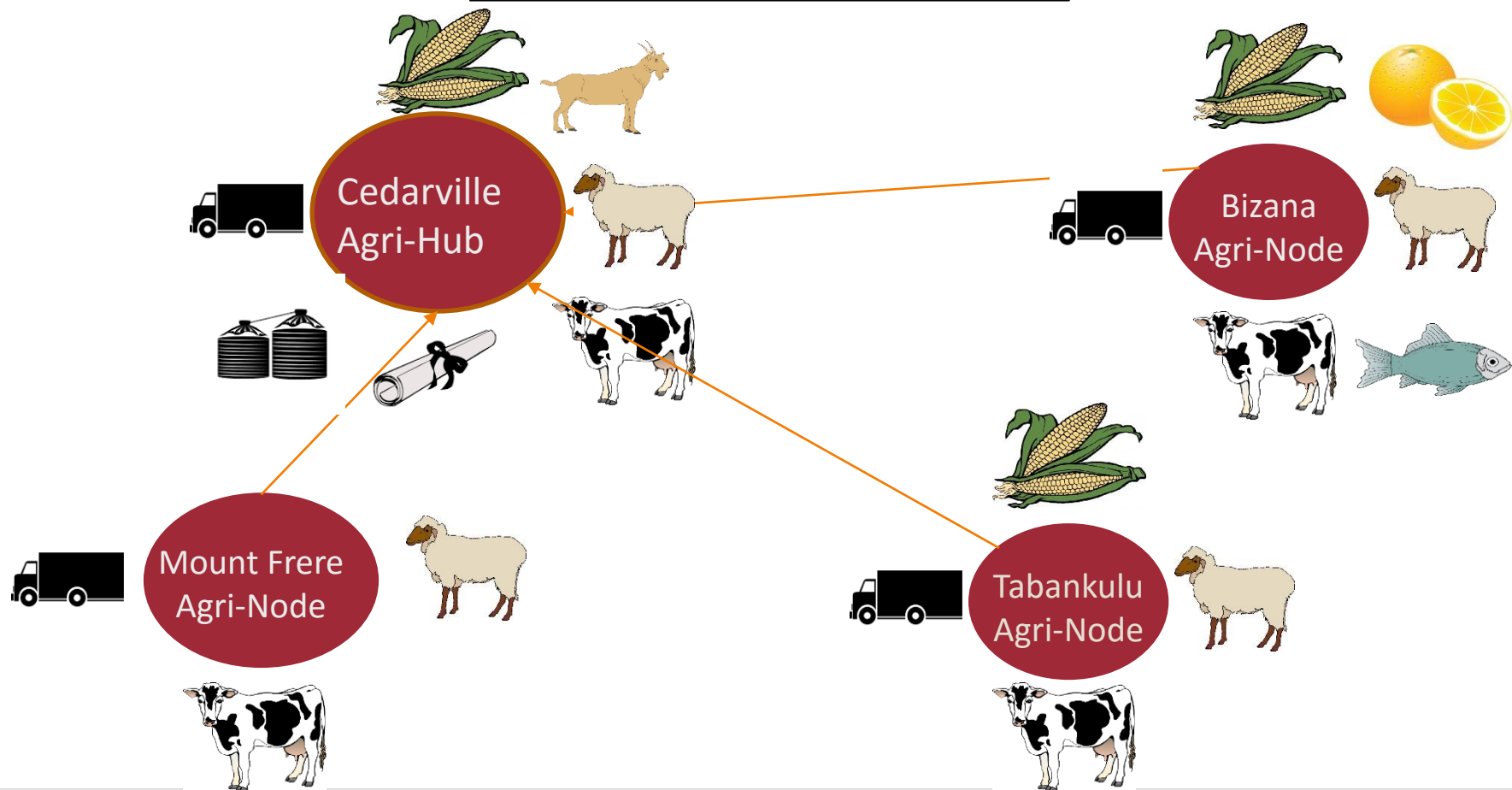




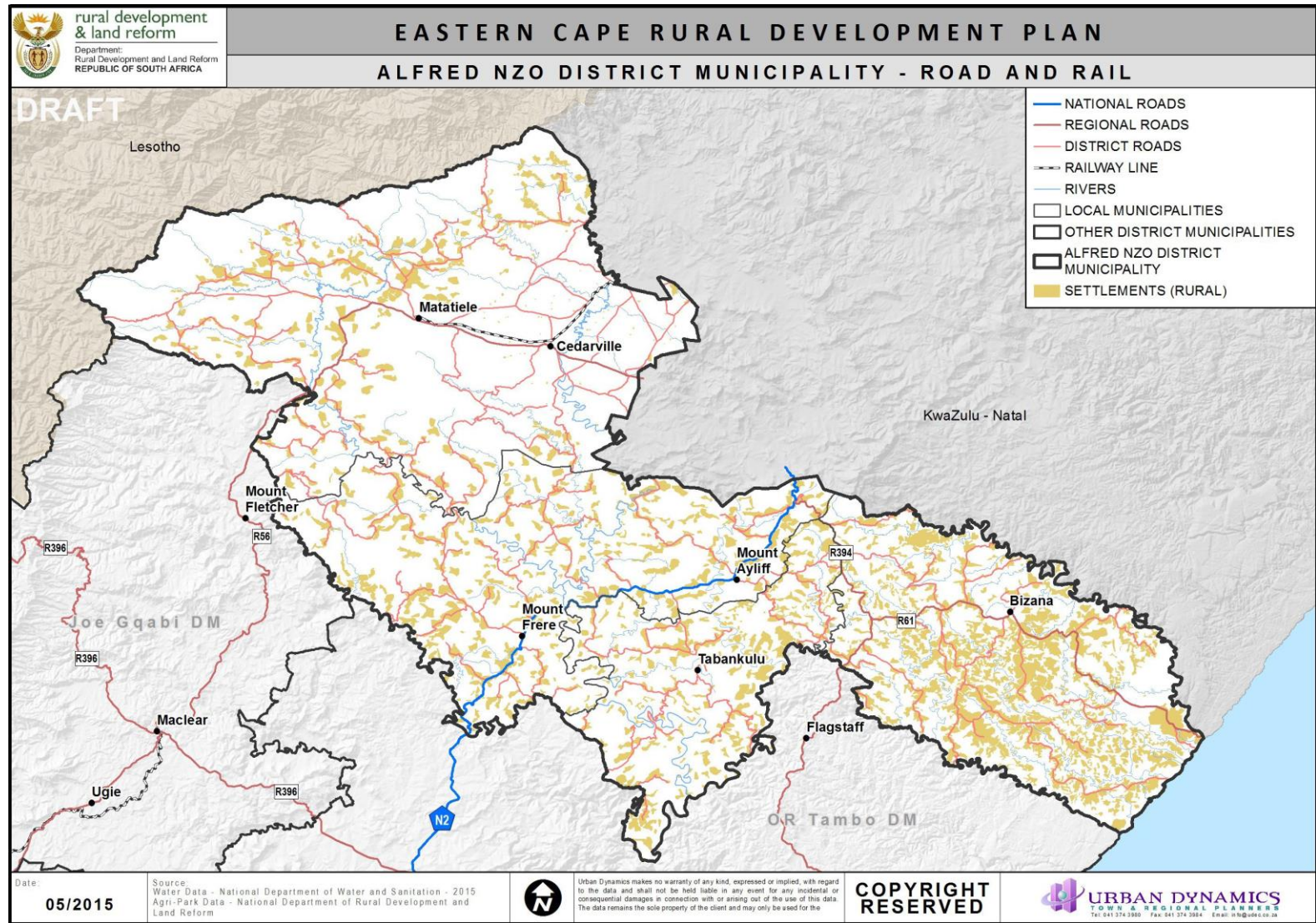


# Rural Agriculture Opportunity – Alfred Nzo

<b>Agriculture Crop Potential:</b>	280 687 ha
<b>Large Stock Units:</b>	196 745
<b>Sheep Small Stock Units:</b>	635 710
<b>Goat Small Stock Units:</b>	22 228

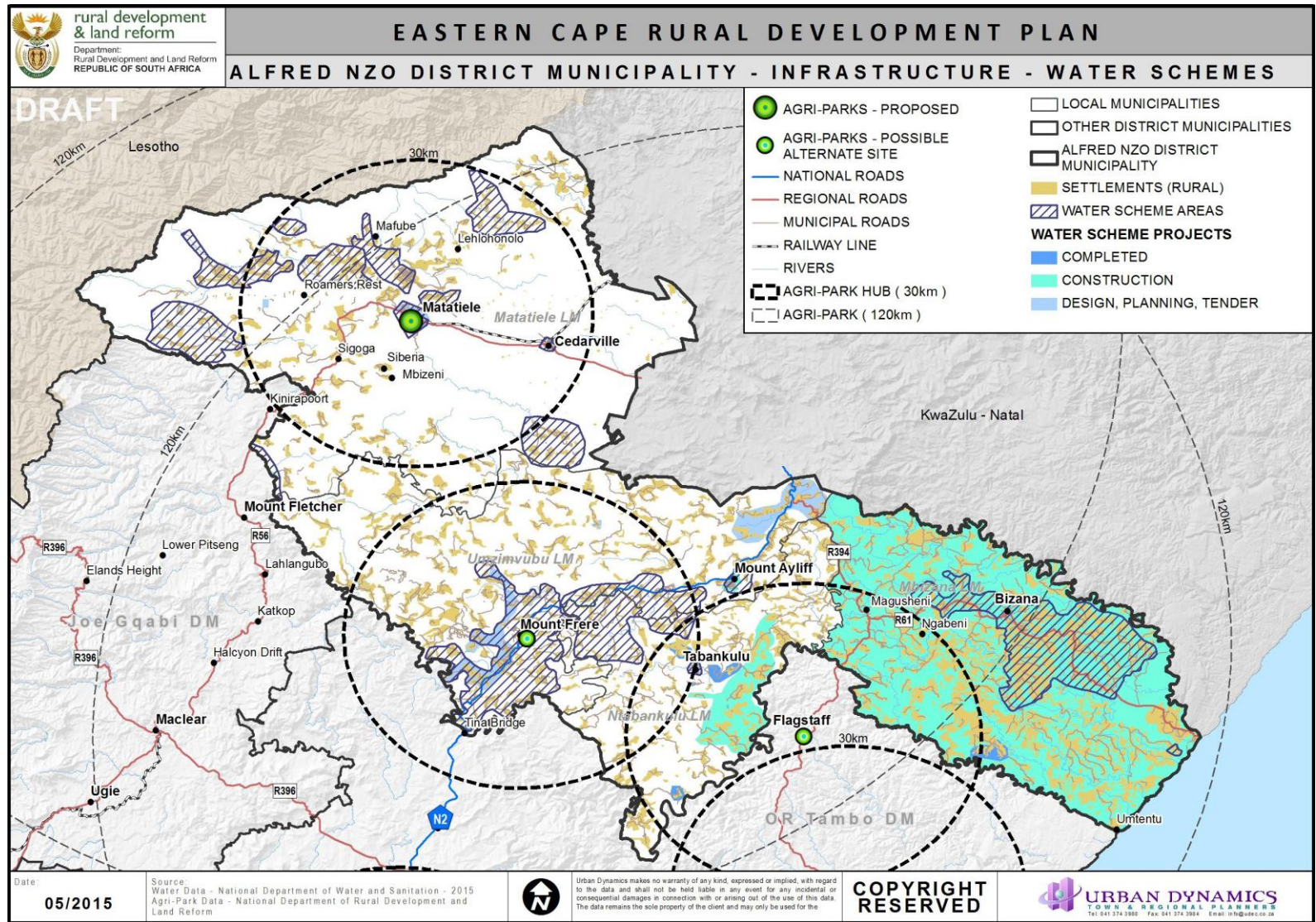


# The Development Framework – Access and Mobility



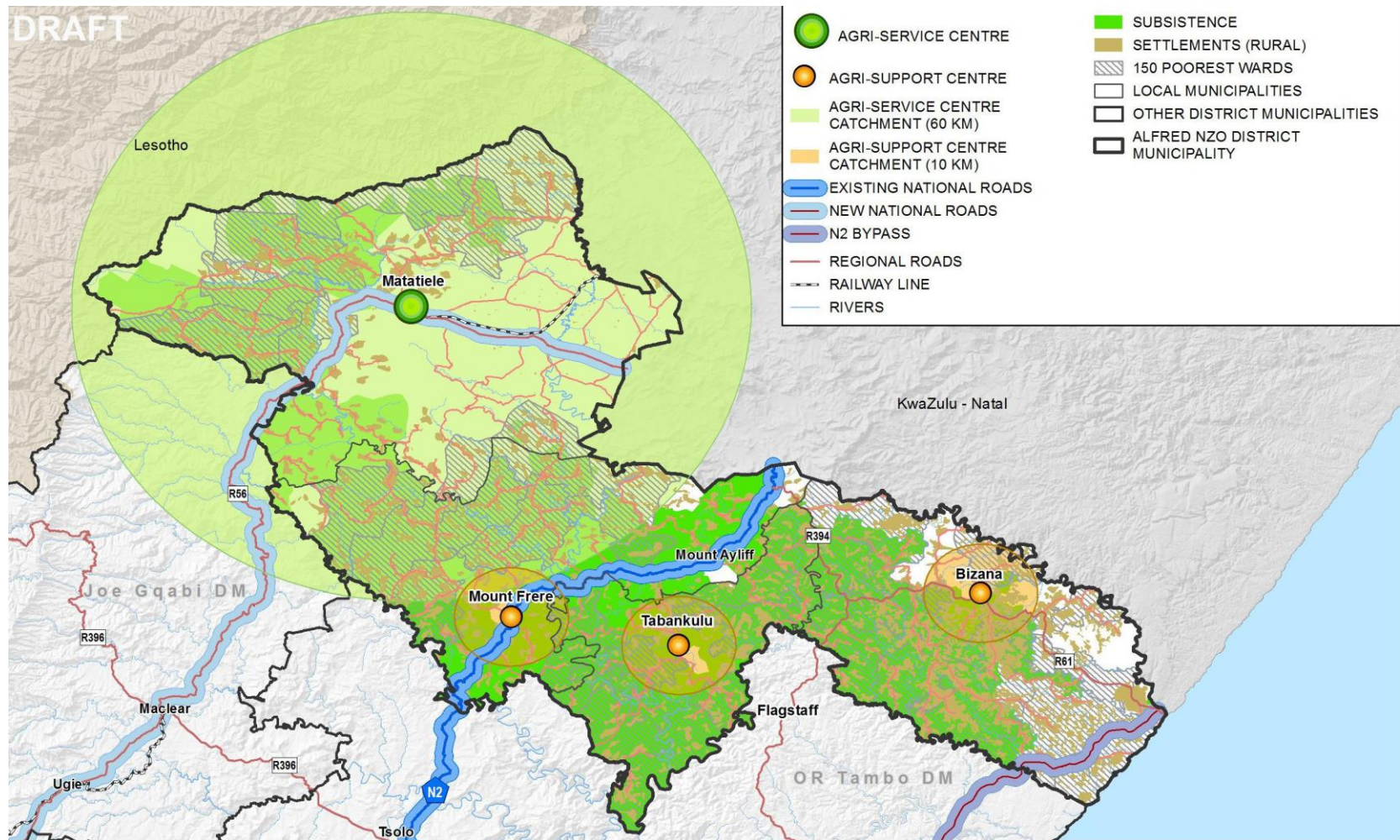


# The Development Framework – Infrastructure Water Schemes



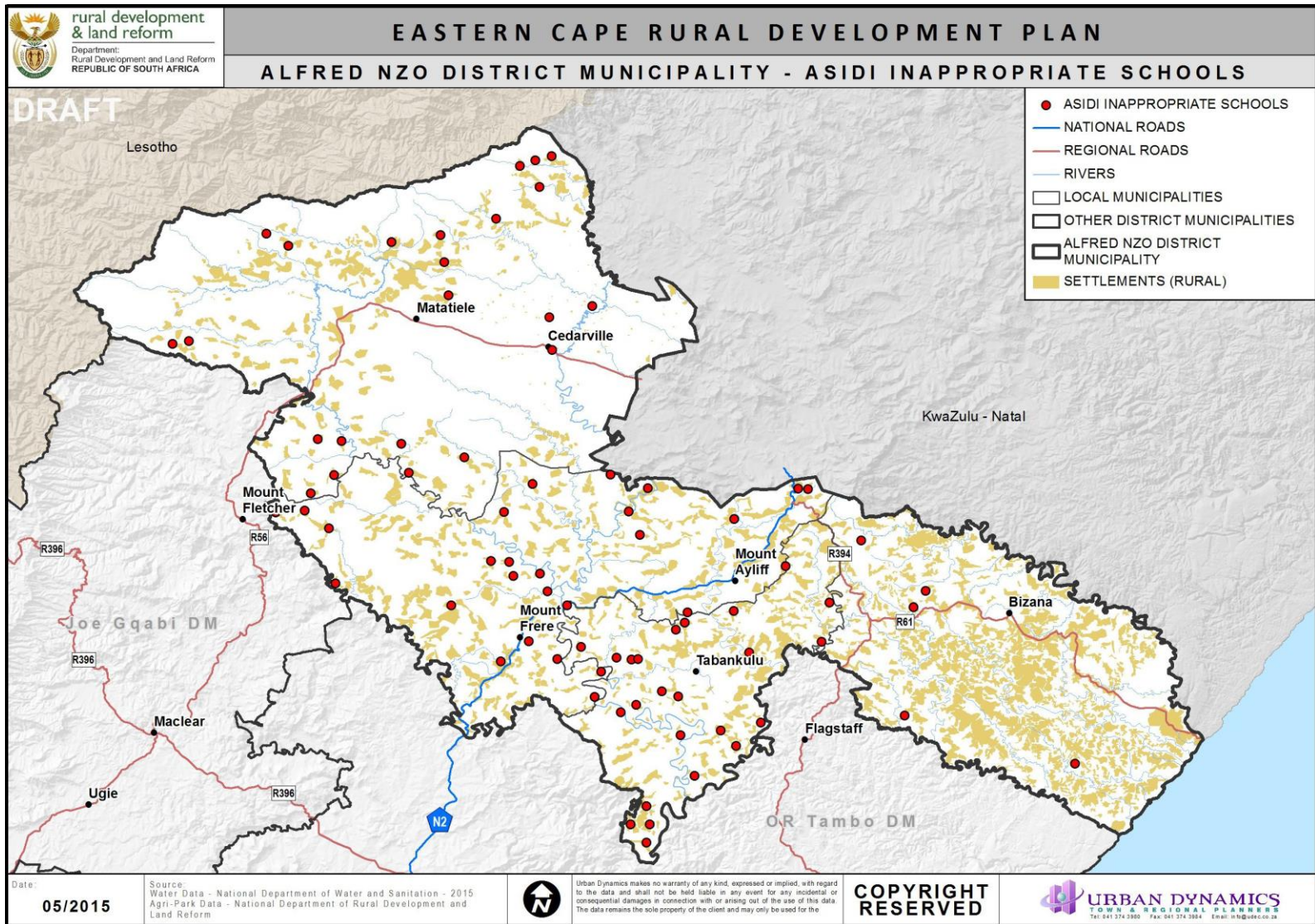


# The Development Framework – Service & Support Centres



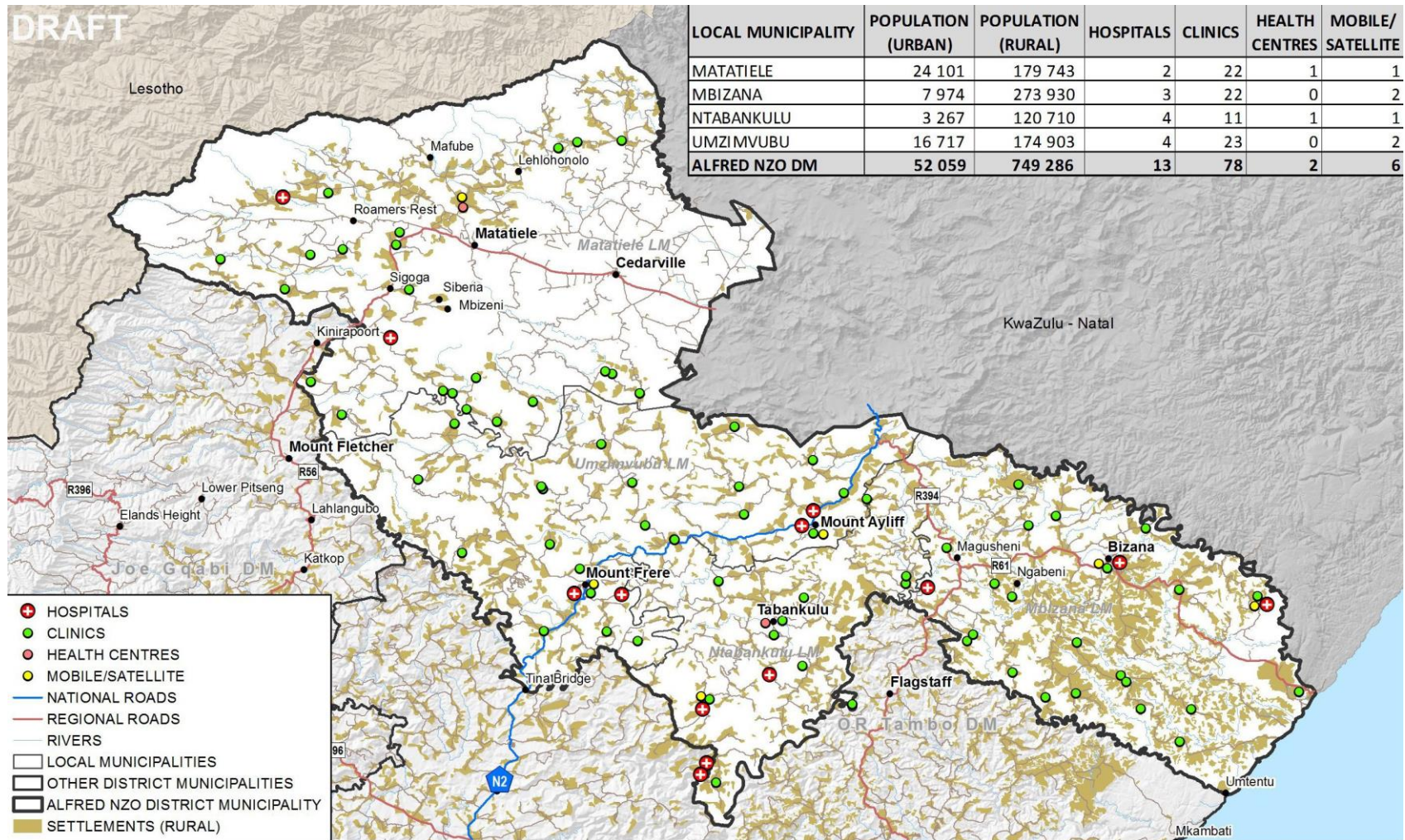


# The Development Framework - ASIDI Schools



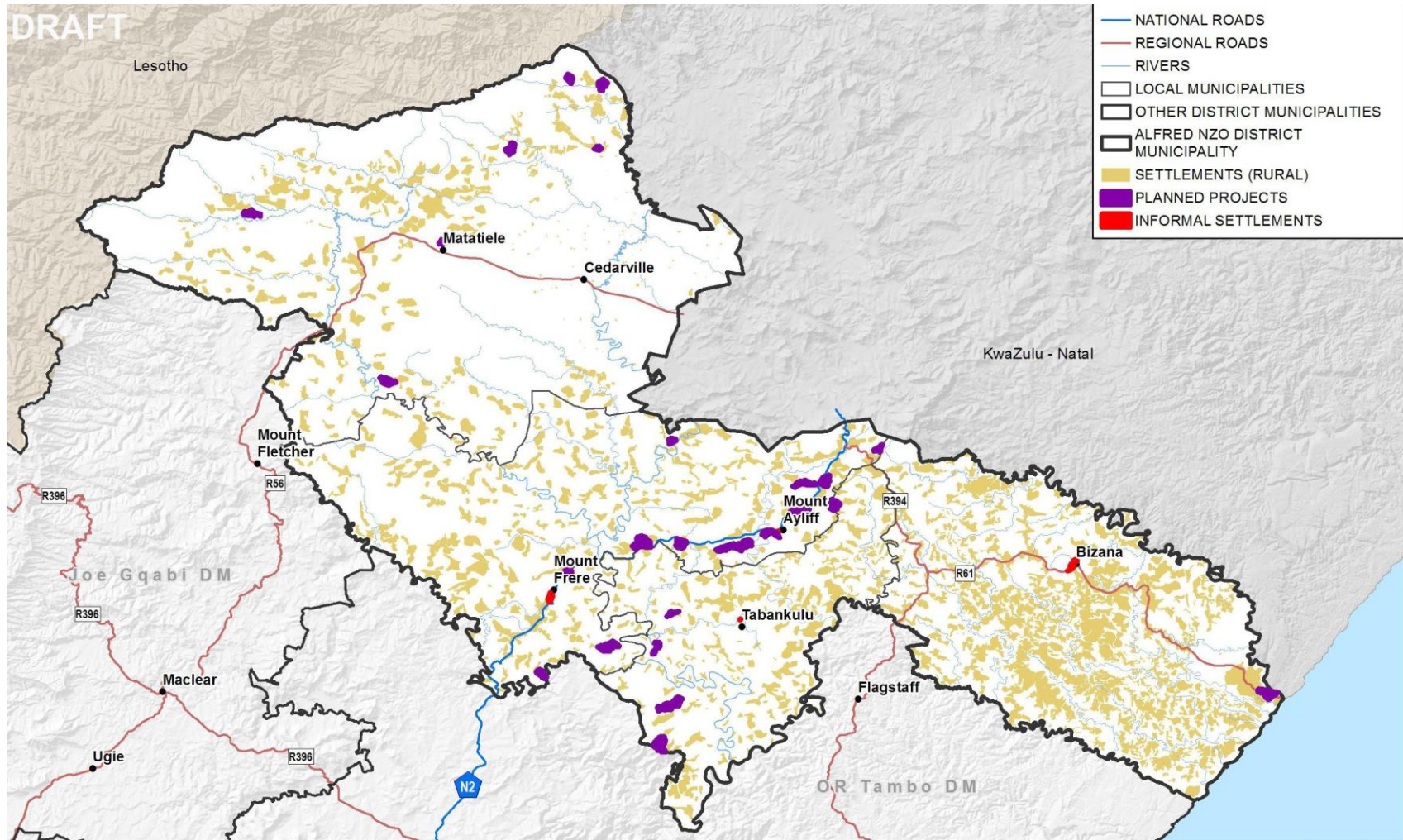


# The Development Framework – Health Facilities



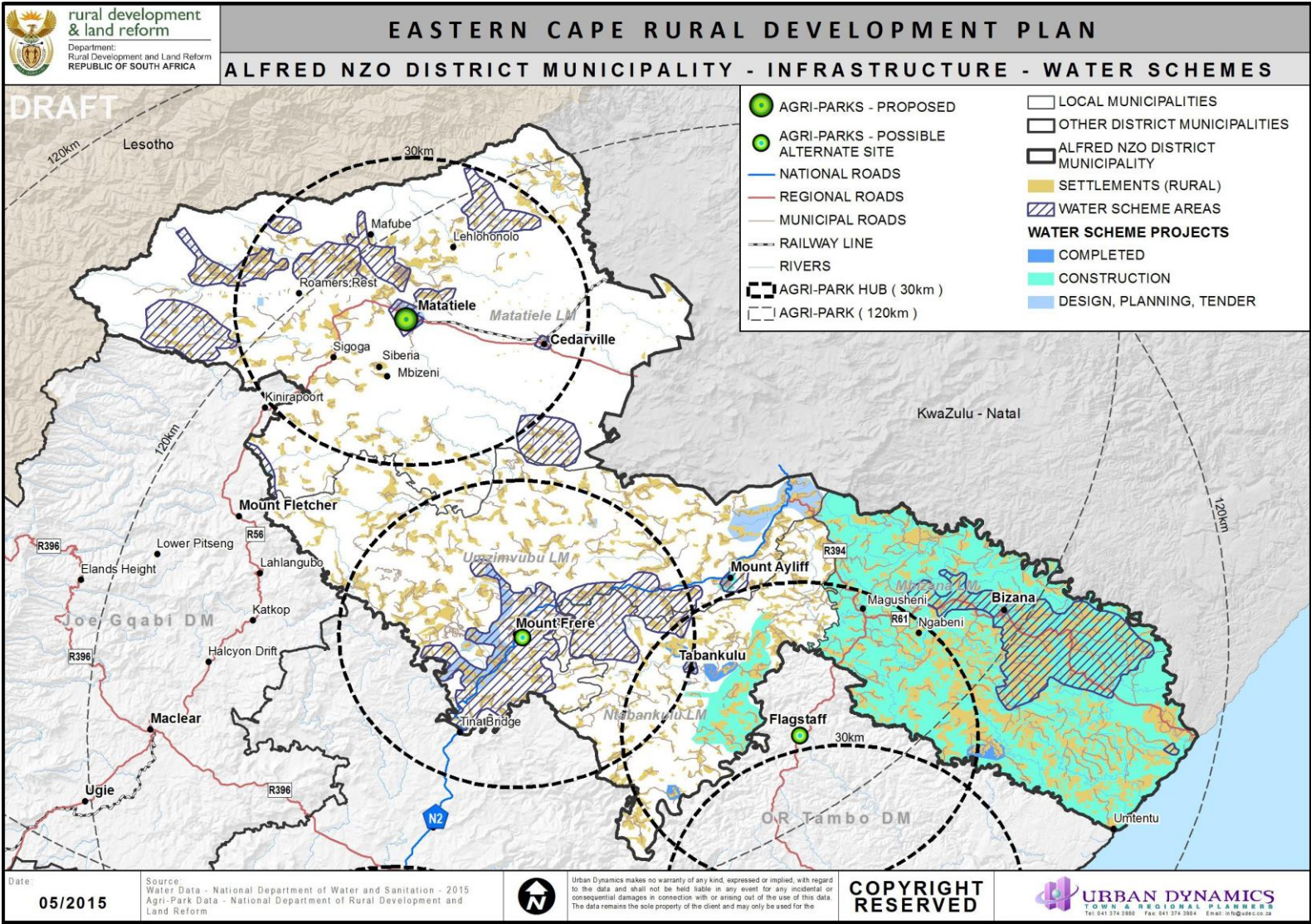


# The Development Framework – New Housing Projects



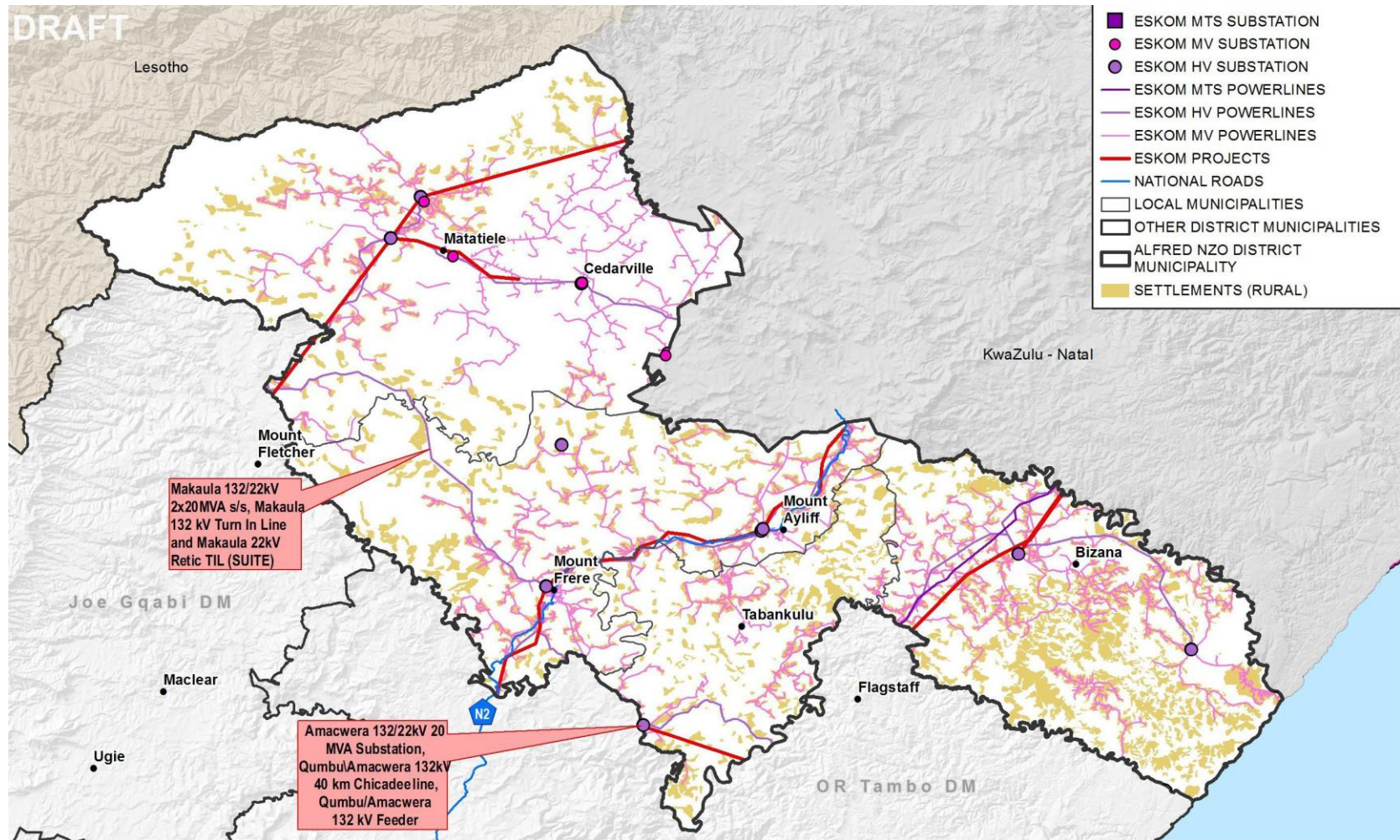


# The Development Framework – New infrastructure



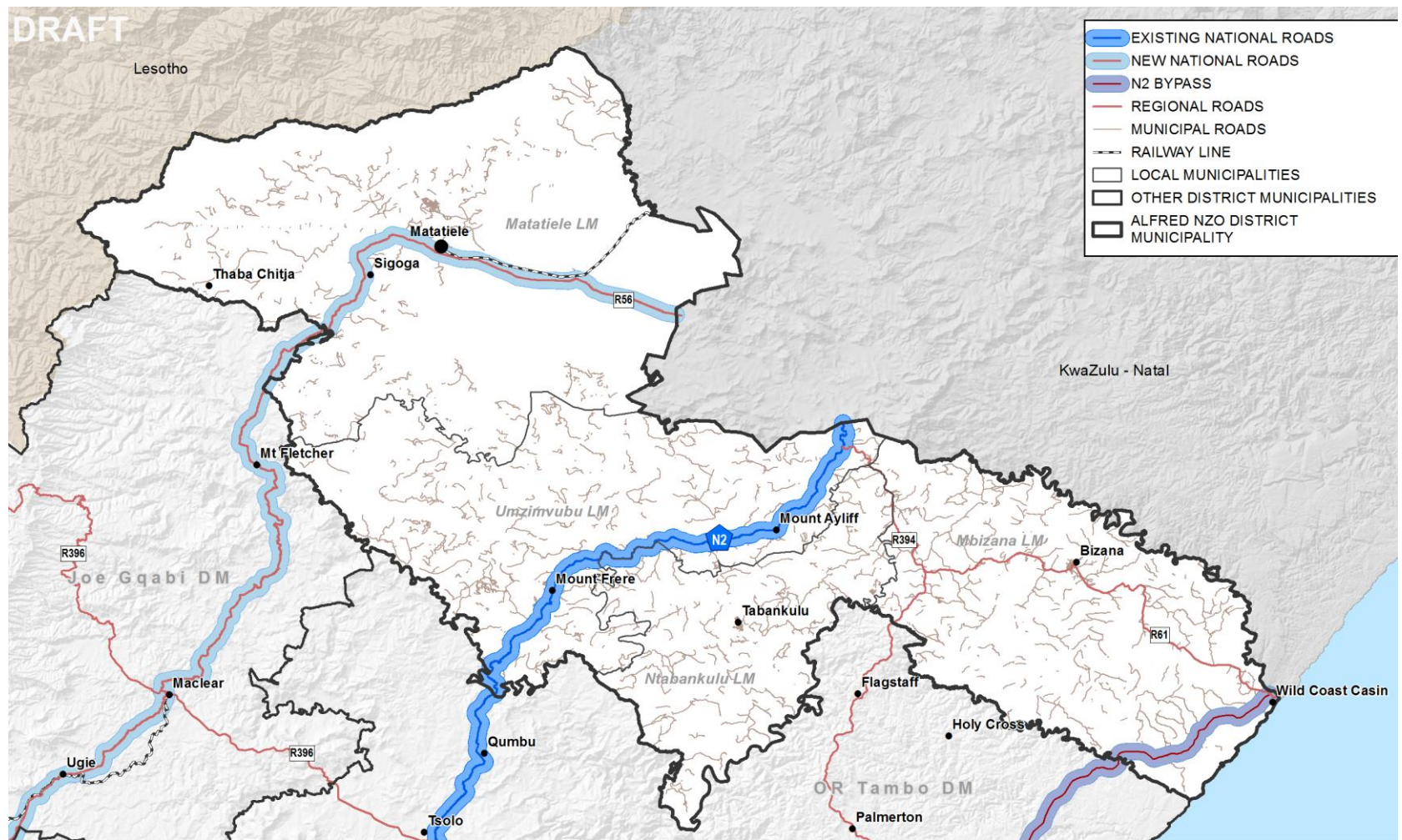


# The Development Framework – New Infrastructure



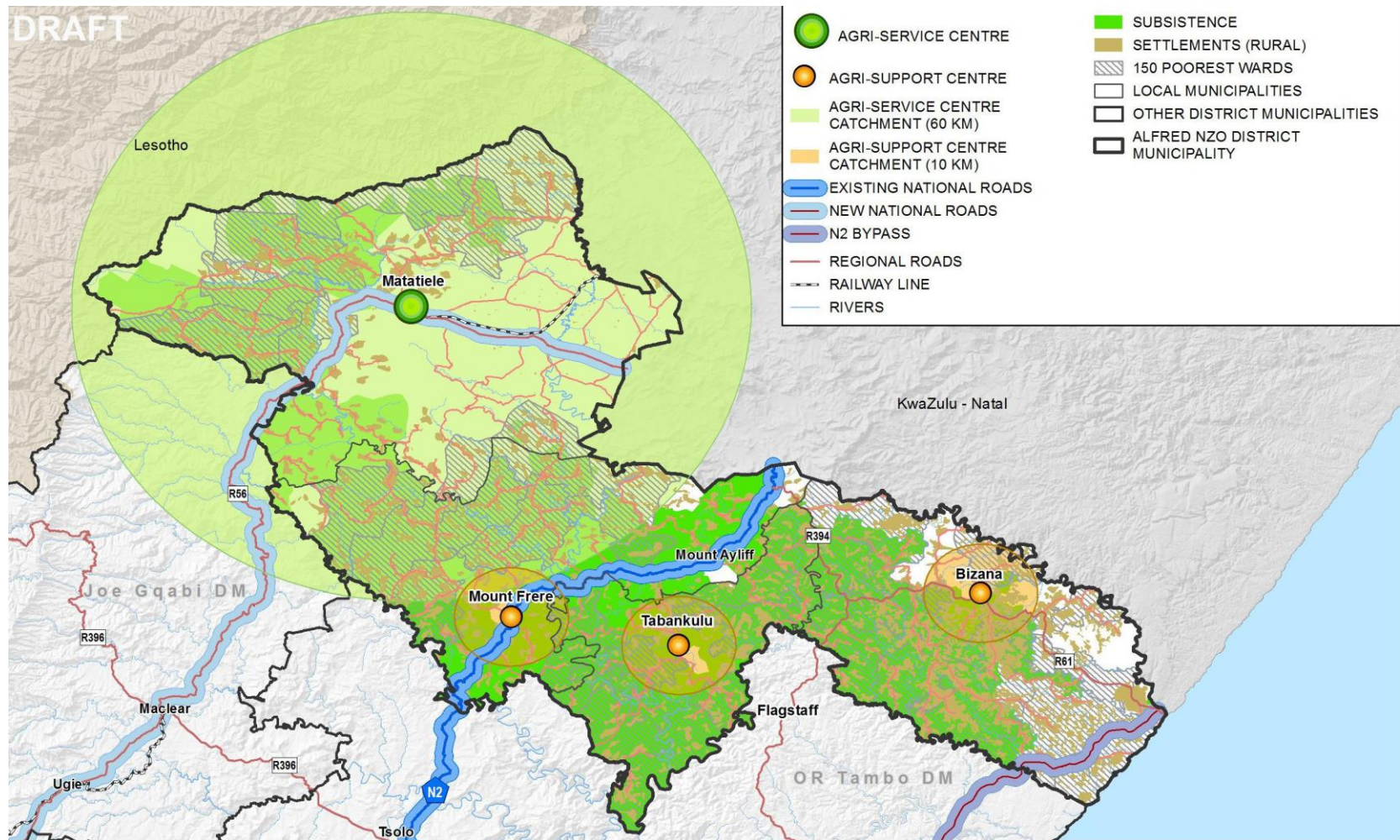


# The Development Framework – New Infrastructure

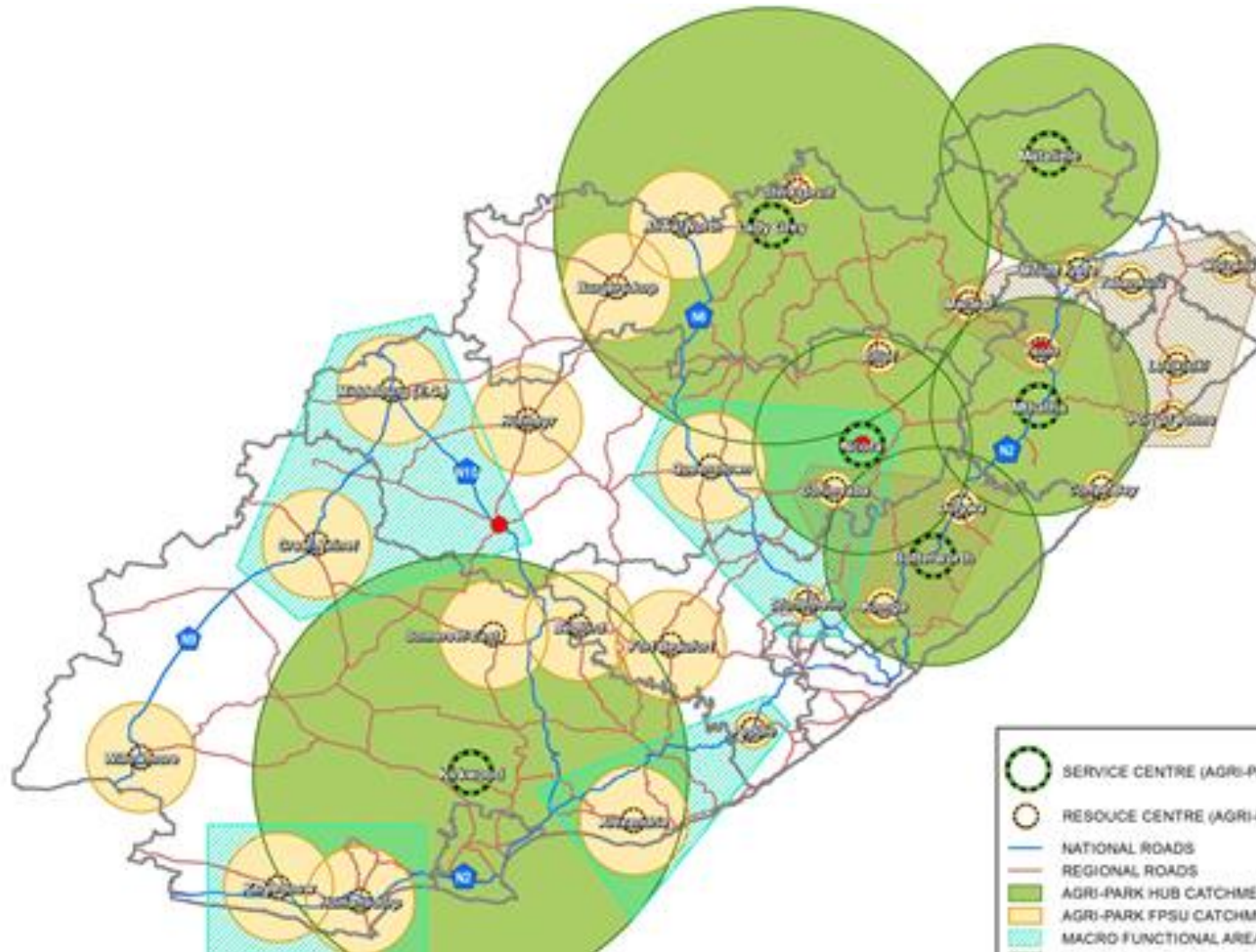




# The Development Framework – Service & Support Centres



# The Provincial Development Framework

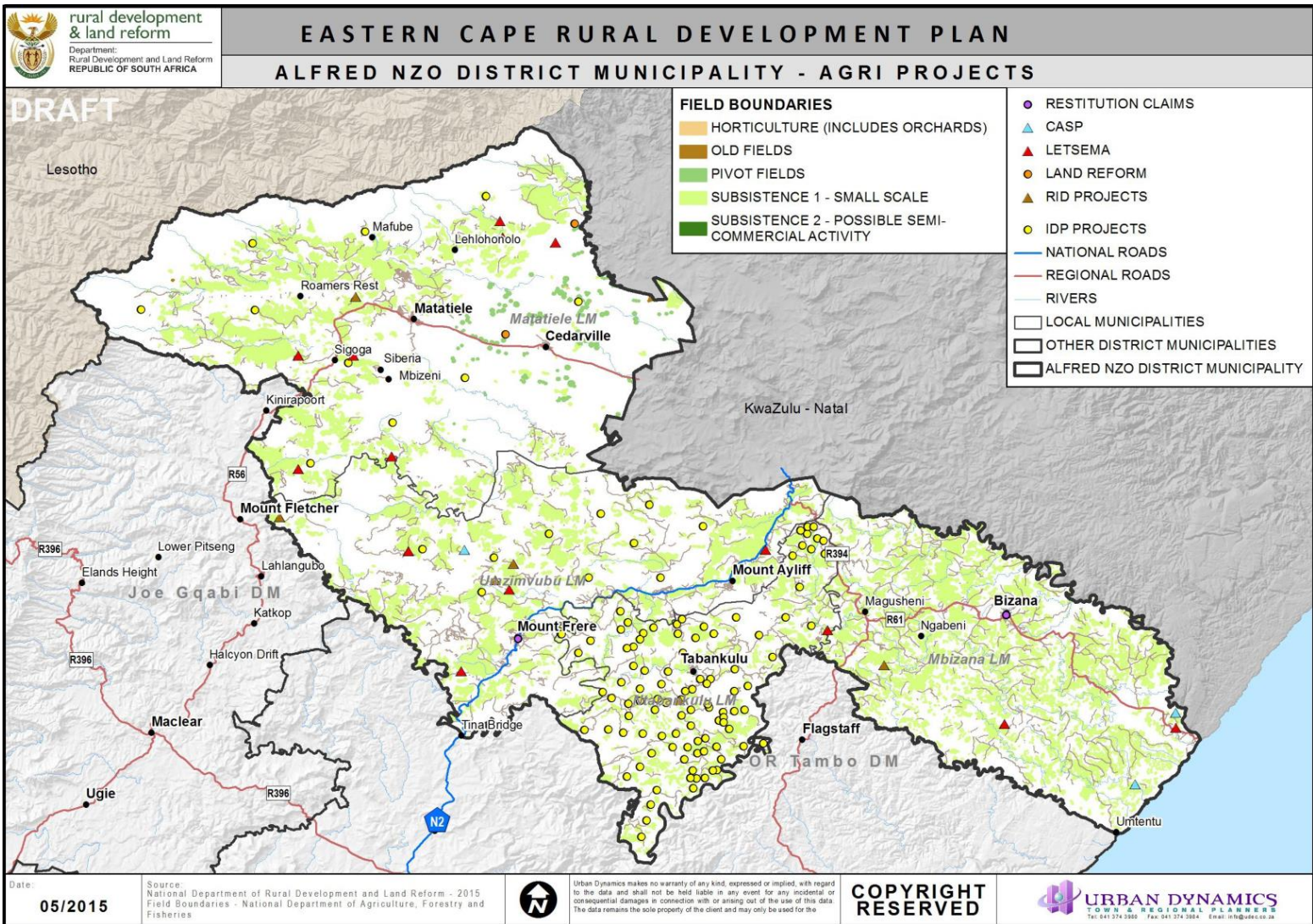






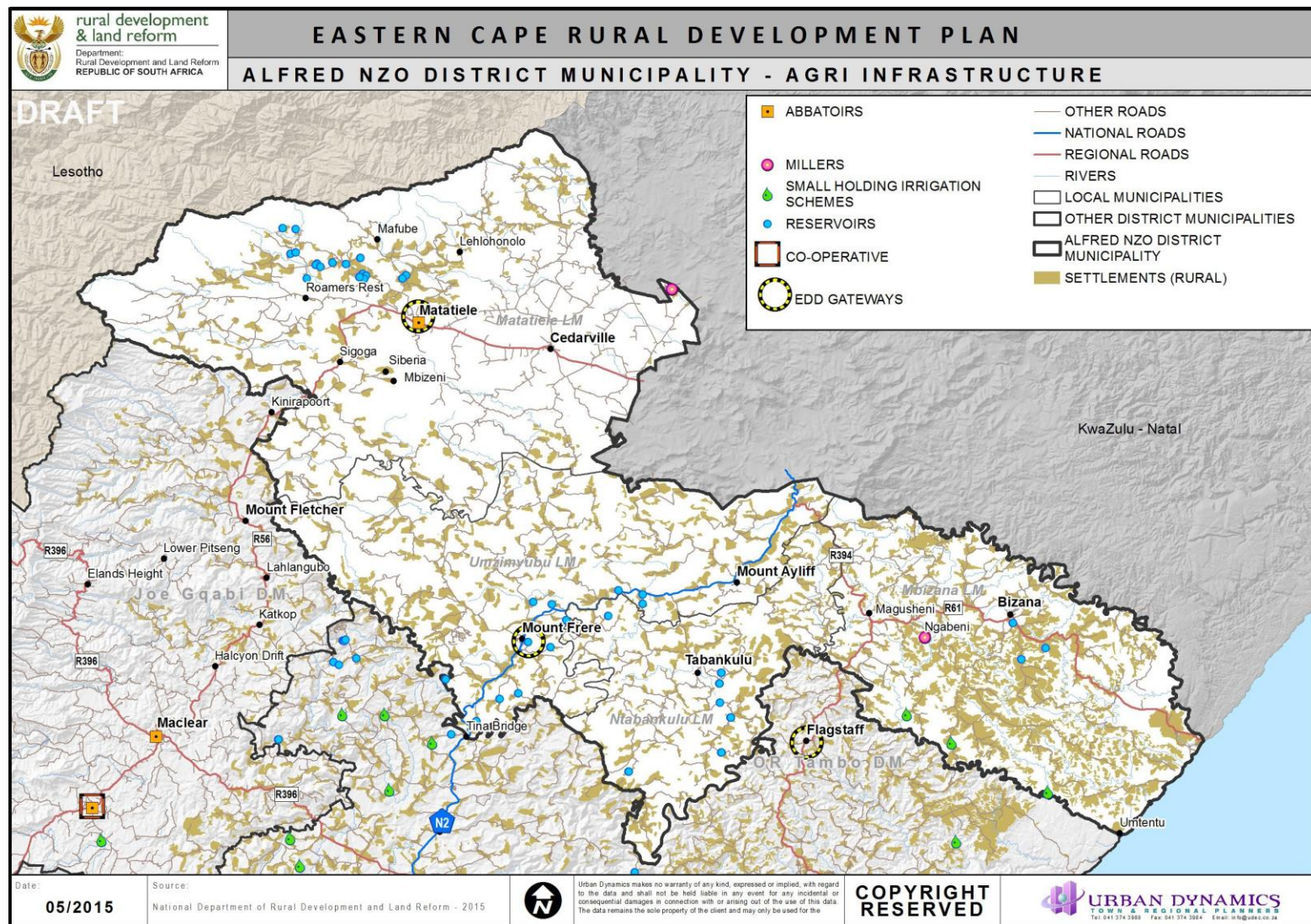
rural development  
& land reform  
(Department)  
Rural Development and Land Reform  
REPUBLIC OF SOUTH AFRICA

# The DRDLR and IDP Projects and Programs



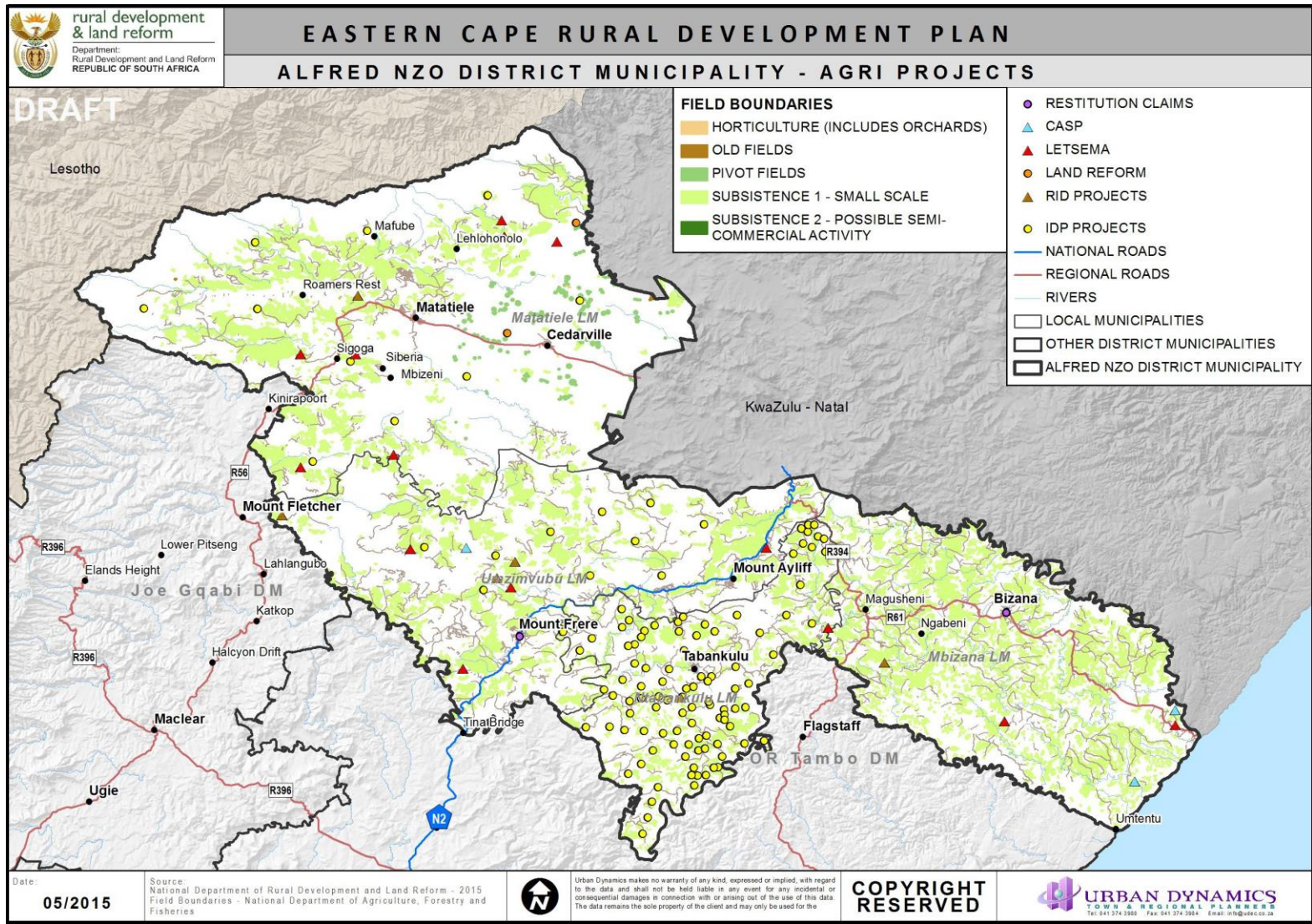


# The DRDLR Projects and Programs





# The DRDLR Projects and Programs

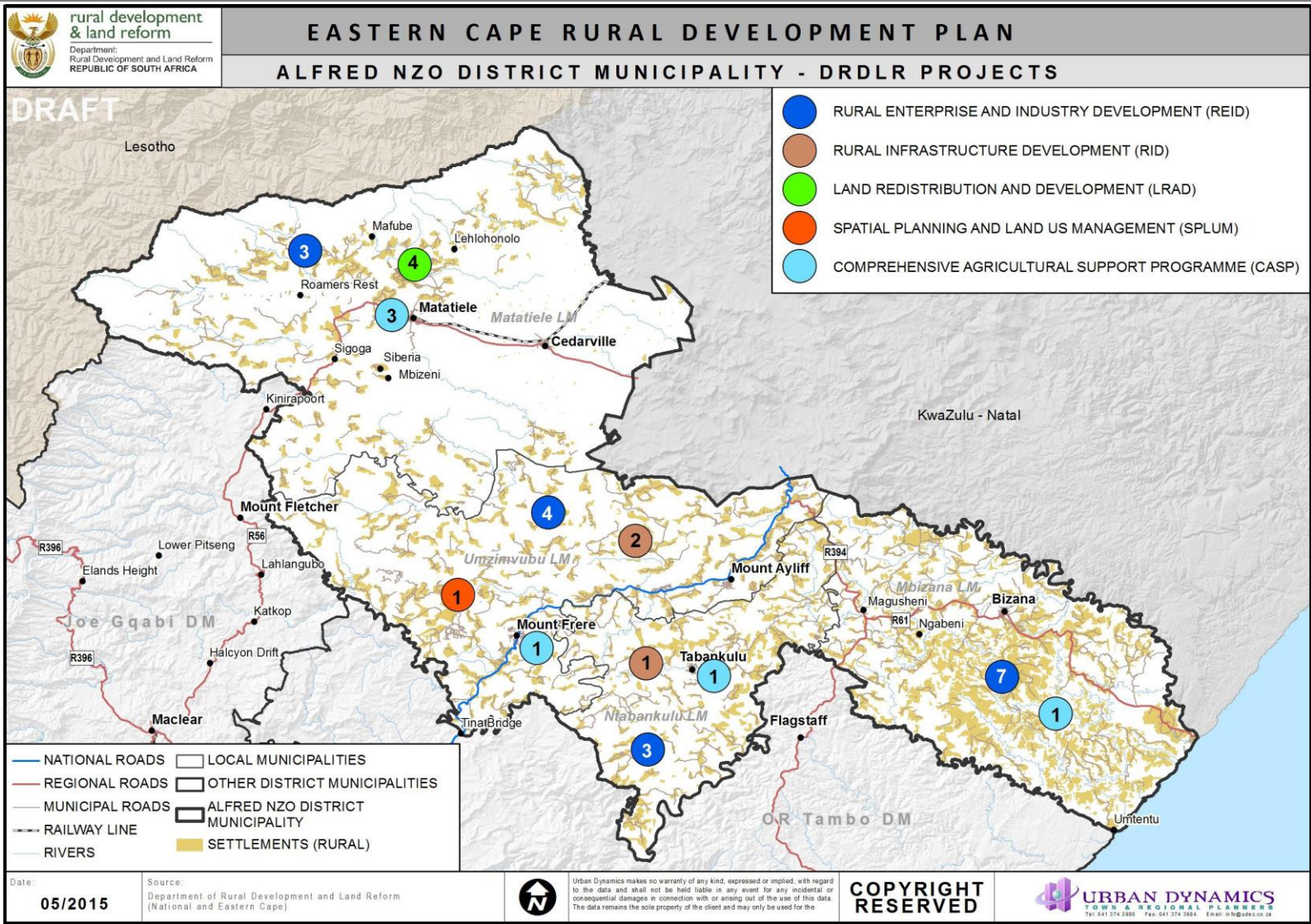


**rural development & land reform**

Department:  
Rural Development and Land Reform  
REPUBLIC OF SOUTH AFRICA

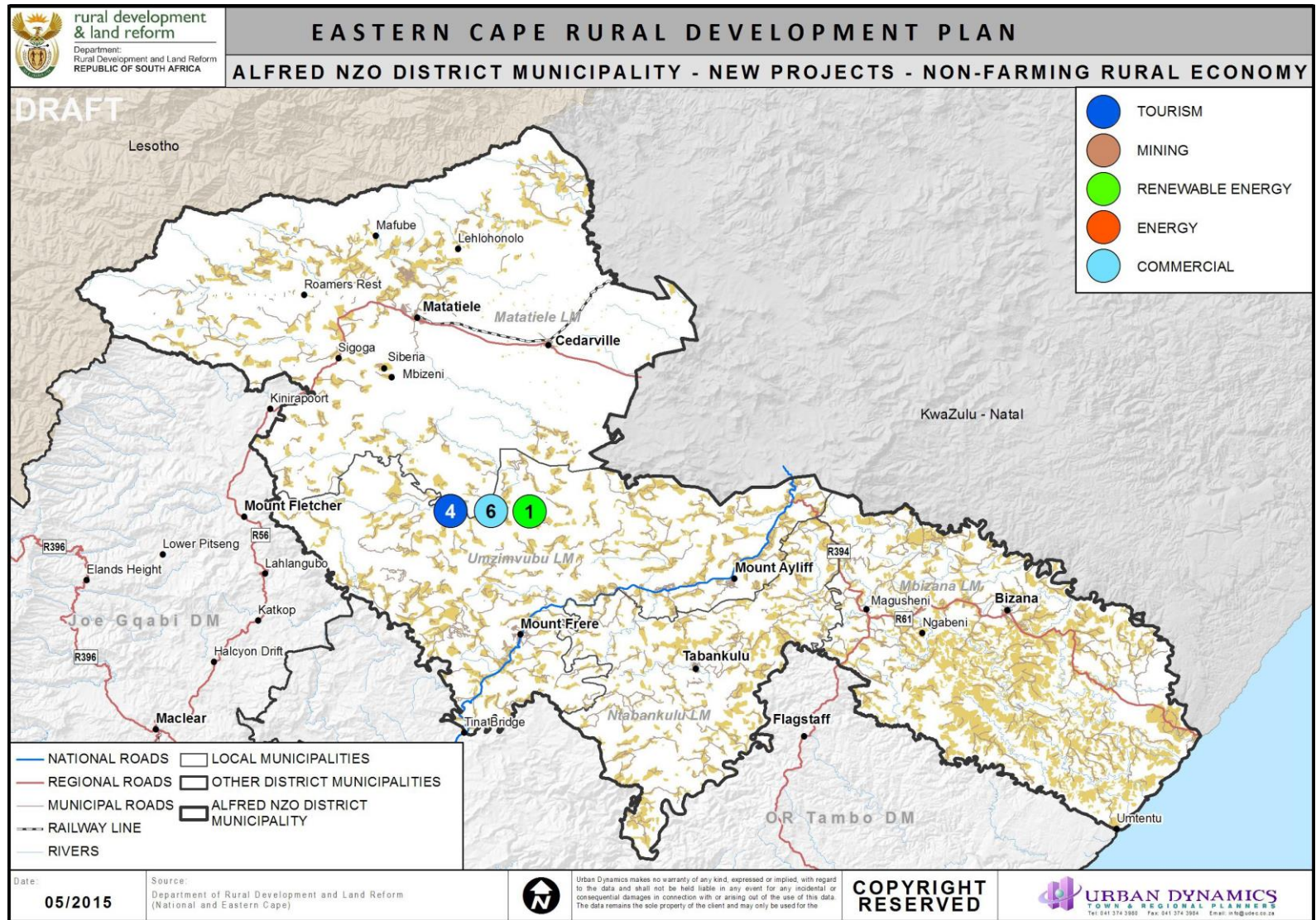


# The DRDLR Projects and Programs





# The DRDLR Projects and Programs



Questions ? ..... and Thank you !

